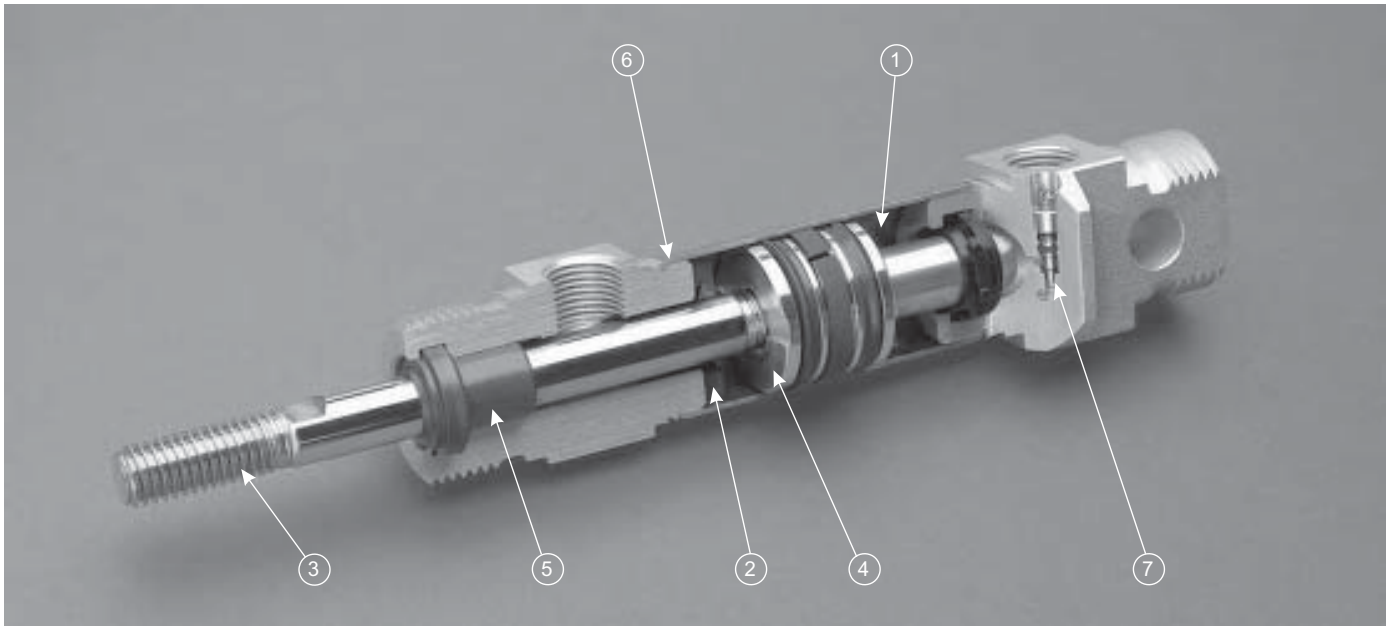


Bimba ISO 6432 Air Cylinders

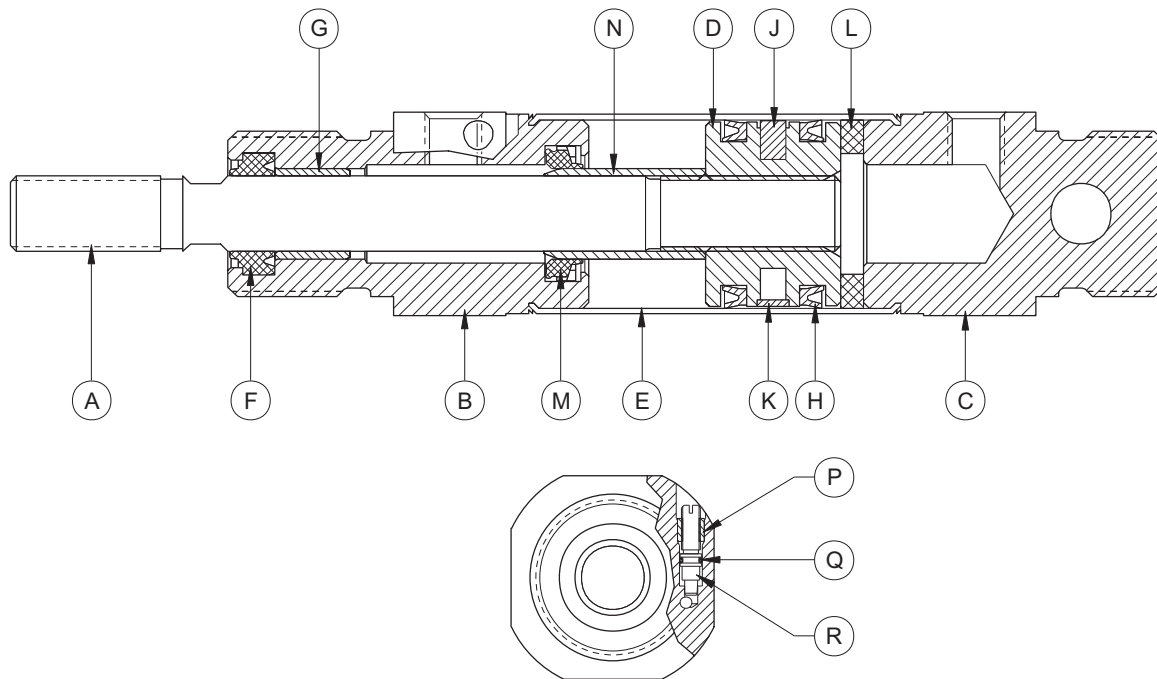


BIMBA meets YOUR NEEDS

- **Reliable Service, World-Wide**
 - From a world-wide leader producing millions of actuators each year
- **Environmental**
 - Pre-lubricated for longer, maintenance free operation ①
- **Noise Reduction**
 - Shock absorbing bumpers ②
- **Performance And Quality Processes Throughout**
 - Roll formed threads ③
 - High strength pistons permanently riveted and sealed ④
 - Roller burnished stainless steel rods
- **Productivity**
 - Advanced bearing and seal materials for higher speed applications ⑤
- **Safety**
 - Double rolled construction ⑥
 - Permanent mechanical retention; needles cannot blow out under pressure ⑦
- **Reduced Envelope**
 - Space savings available resulting from smaller external dimensions
- **A Material For Any Application**
 - Heads available in Aluminum, Stainless Steel and Delrin®
- **Unique Customer Solutions**
 - Rapid design and delivery time for custom modifications

Bimba ISO 6432 Air Cylinders

Materials

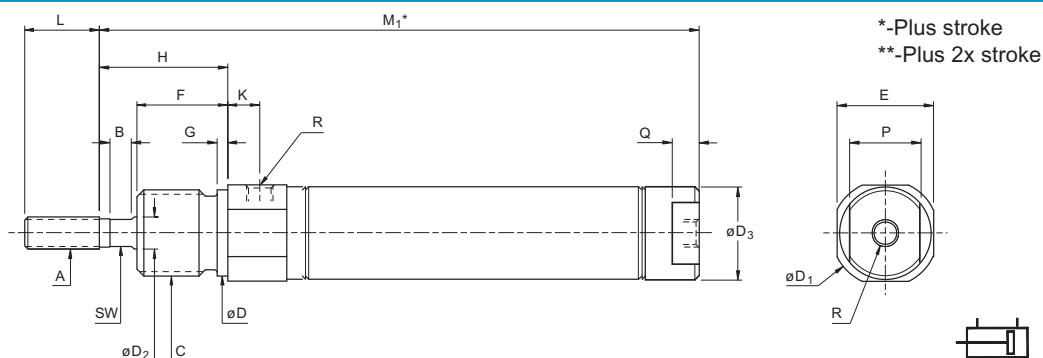


ITEM	COMPONENT	MATERIAL
A	Piston Rod	Stainless Steel (type 303 s31)
B	Rod Guide	Aluminium Alloy (anodized) Delrin® Plastic - (type PCE) Stainless Steel - (option Y)
C	Rear Head	Aluminium Alloy (anodized) Delrin® Plastic - (type PCE) Stainless Steel - (option Y)
D	Piston	Aluminium Alloy Brass - (type ED)
E	Body	Stainless Steel (type 304)
F	Rod Seal/Rod Wiper	Nitrile (NBR) or Fluoro-rubber (FPM) - (option HR)
G	Rod Bearing	Self Lubricating Thermoplastic Alloy
H	Piston Seal	Nitrile (NBR) or Fluoro-rubber (FPM) - (option HR)
J	Magnet	Neodymium Iron Boron Nitrile
K	Piston Bearing Ring	Carbon Filled PTFE
L	Bumper	Fluoro-rubber (FPM)
M	Cushion Seal	Nitrile (NBR) - Standard or Fluoro-rubber (FPM) - (option HR)
N	Cushion Sleeve	Aluminium Alloy
P	Cushion Screw Retainer	Aluminium Alloy (anodized) Stainless Steel - (type PCE)
Q	Cushion o-ring	Fluoro-rubber (FPM)
R	Cushion Screw	Stainless Steel (type 303 s31)

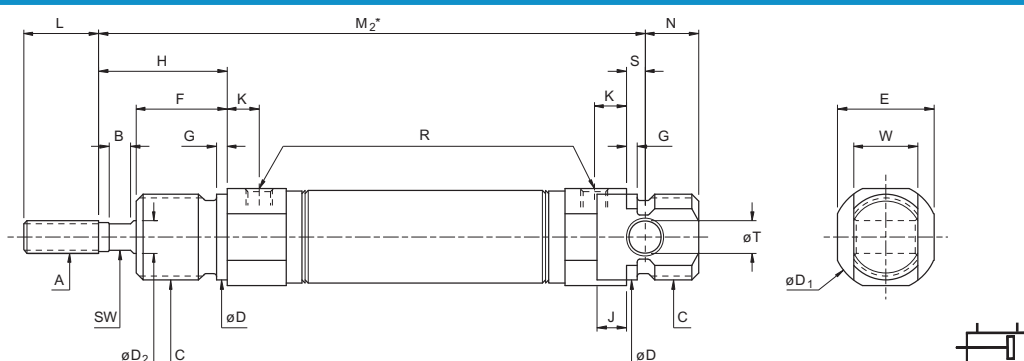
Bimba ISO 6432 Air Cylinders

Double Acting

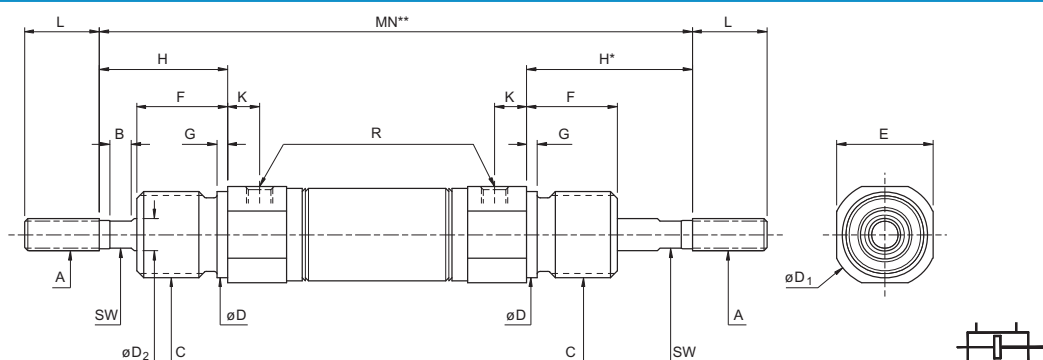
NOSE MOUNT - N option



UNIVERSAL MOUNT - U option



DOUBLE ENDED

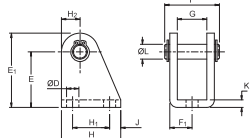


Bore	A ^{6g}	B	C ^{6g}	D	D ₁	D ₂ ^{h8}	D ₃	E	F	G	H	J	K	L	P	Q	N	R	S	T ^{H9}	W ^{d13}	SW	M ₁	M ₂	MN
8	M4x0.7	-	M12x1.25	12	17	4	9	15	12	2	16	3	6	12	8	4	9	M5x0.8	3	4	8	-	56.5	64	77
10	M4x0.7	-	M12x1.25	12	17	4	11	15	12	2	16	3	6	12	10	5	9	M5x0.8	3	4	8	-	58	64	77
12	M6x1.0	4	M16x1.5	16	20	6	13	18	17	2	24	5.4	6	14	10	5	8	M5x0.8	3.6	6	12	5	68.7	77	97
16	M6x1.0	4	M16x1.5	16	20	6	17	18	17	2	24	5.5	6	14	13	5	10	M5x0.8	3.5	6	12	5	74	84	104
20	M8x1.25	4	M22x1.5	22	28	8	21	24	19	3	25	8	8	19	19	7	11	G1/8	4	8	16	6	84.5	96	117
25	M10x1.25	4	M22x1.5	22	30	10	26	27	22	3	30	6	8	20	22	8	11	G1/8	6	8	16	8	92	106	130

Bimba ISO 6432 Air Cylinders

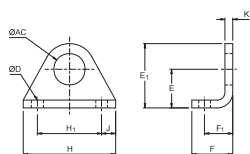
Accessories - Carbon Steel

CLEVIS FOOT



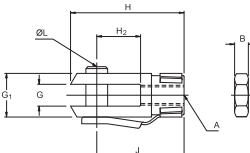
Bore	Type	D	E	E ₁	F	F ₁	G	H	H ₁	H ₂	J	K	L
8, 10	CFB-1	4.5	24	29	17	6.5	8.1	20	12.5	5	4	2.5	4
12, 16	CFB-2	5.5	27	34	23	9	12.1	25	15	7	5	3	6
20, 25	CFB-3	6.6	30	40	29.5	12	16.1	32	20	10	6	4	8

FOOT MOUNTING



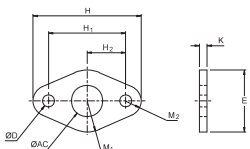
Bore	Type	AC	D	E	E ₁	F	F ₁	H	H ₁	J	K
8, 10	FB-1	12.1	4.6	15	25	16	11	36	25	5.5	3
12, 16	FB-2	16.1	5.6	20	33	20	14	45	32	6.5	4
20, 25	FB-3	22.1	6.6	25	40	24	17	56	40	8	4.5

ROD CLEVIS



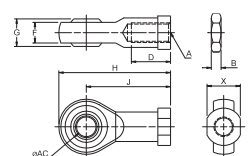
Bore	Type	A	B	G	G ₁	H	H ₂	J	L
8, 10	RC-M4x0.7	M4x0.7	3.2	4	8	21	8	16	84
12, 16	RC-M6x1.0	M6x1.0	5	6	12	31	12	24	6
20	RC-M8x1.25	M8x1.25	4	8	16	42	16	32	8
25	RC-M10x1.25	M10x1.25	5	10	20	52	24	40	10

FLANGE MOUNTING



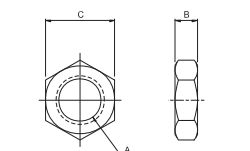
Bore	Type	AC	D	E	H	H ₁	H ₂	K	M ₁	M ₂
8, 10	MF-1	12.1	4.6	24	42	30	15	3	12	6
12, 16	MF-2	16.1	5.6	28	54	40	20	4	14	7
20, 25	MF-3	22.1	6.6	38	66	50	25	4.5	19	8

SPHERICAL ROD EYE



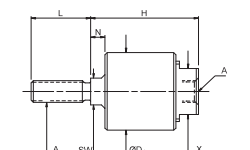
Bore	Type	A	AC	B	D	F	G	H	J	X
8, 10	SRE-M4x0.7	M4x0.7	5	3.2	10	6	8	36	27	9
12, 16	SRE-M6x1.0	M6x1.0	6	5	12	6.75	9	40	30	11
20	SRE-M8x1.25	M8x1.25	8	4	16	9	12	48	36	14
25	SRE-M10x1.25	M10x1.25	10	5	20	10.5	14	57	43	17

ROD/MOUNTING NUT



Bore	Type	A	B	C	Type	A	B	C
8, 10	RN-1	M4x0.7	3.2	7	MN-1	M12x1.25	7	19
12, 16	RN-2	M6x1.0	5	10	MN-2	M16x1.5	8	24
20	RN-3	M8x1.25	4	13	MN-3	M22x1.5	10	32
25	RN-4	M10x1.25	5	17				

ROD COUPLER



Bore	Type	A	D ₁	H	L	N	SW	X
8, 10	AC-M4x0.7	M4x0.7	14	24	14	64	-	11.3
12, 16	AC-M6x1.0	M6x1.0	29	44	13	10	10	17
20	AC-M8x1.25	M8x1.25	32	50	19	12	13	21
25, 32	AC-M10x1.25	M10x1.25	32	50	19	12	13	21
40	AC-M12x1.25	M12x1.25	32	50	19	12	13	21
50, 63	AC-M16x1.5	M16x1.5	32	50	32	12	14	21
80, 100	AC-M20x1.5	M20x1.5	45	58	29	12	21	29