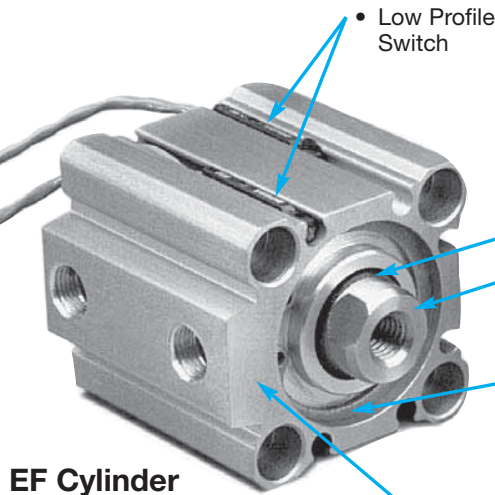


Bimba EF Cylinders

The Bimba EF Series is a compact, aluminum-extruded body air cylinder designed for international machine requirements.

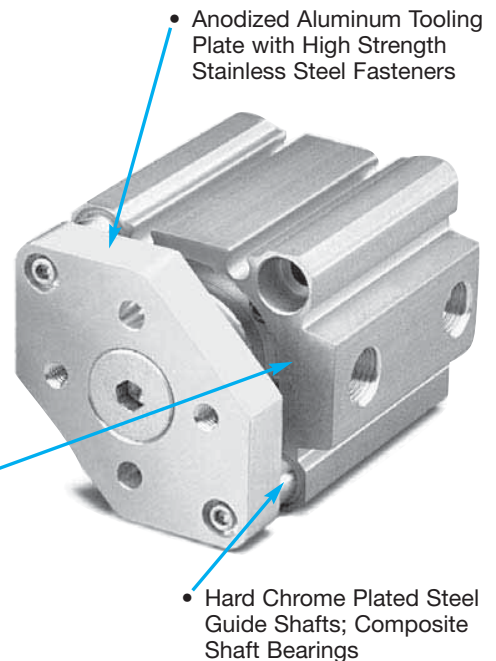
The body is anodized in a special PTFE-impregnation process that provides superior wear characteristics. With its streamlined look, low cost and low-profile switch, it is an excellent choice for space-saving machine design.



- Low Profile Switch

- Nitrile Piston Seal
- High Strength Aluminum Alloy Piston
- Nitrile Rod Seal and Wiper
- 4301 (303) Stainless Steel Rod
- Nitrile Rod Guide Seal
- Zinc Plated Carbon Steel Retaining Ring
- Bronze Bushing (12-20mm); Self-lubricating Nylon (25-100mm)
- Bronze Rod Guide (12-20mm); Anodized Aluminum (25-100mm)
- PTFE-Impregnated, Hard Anodized Aluminum Body

EFT Cylinder



- Anodized Aluminum Tooling Plate with High Strength Stainless Steel Fasteners

- Hard Chrome Plated Steel Guide Shafts; Composite Shaft Bearings

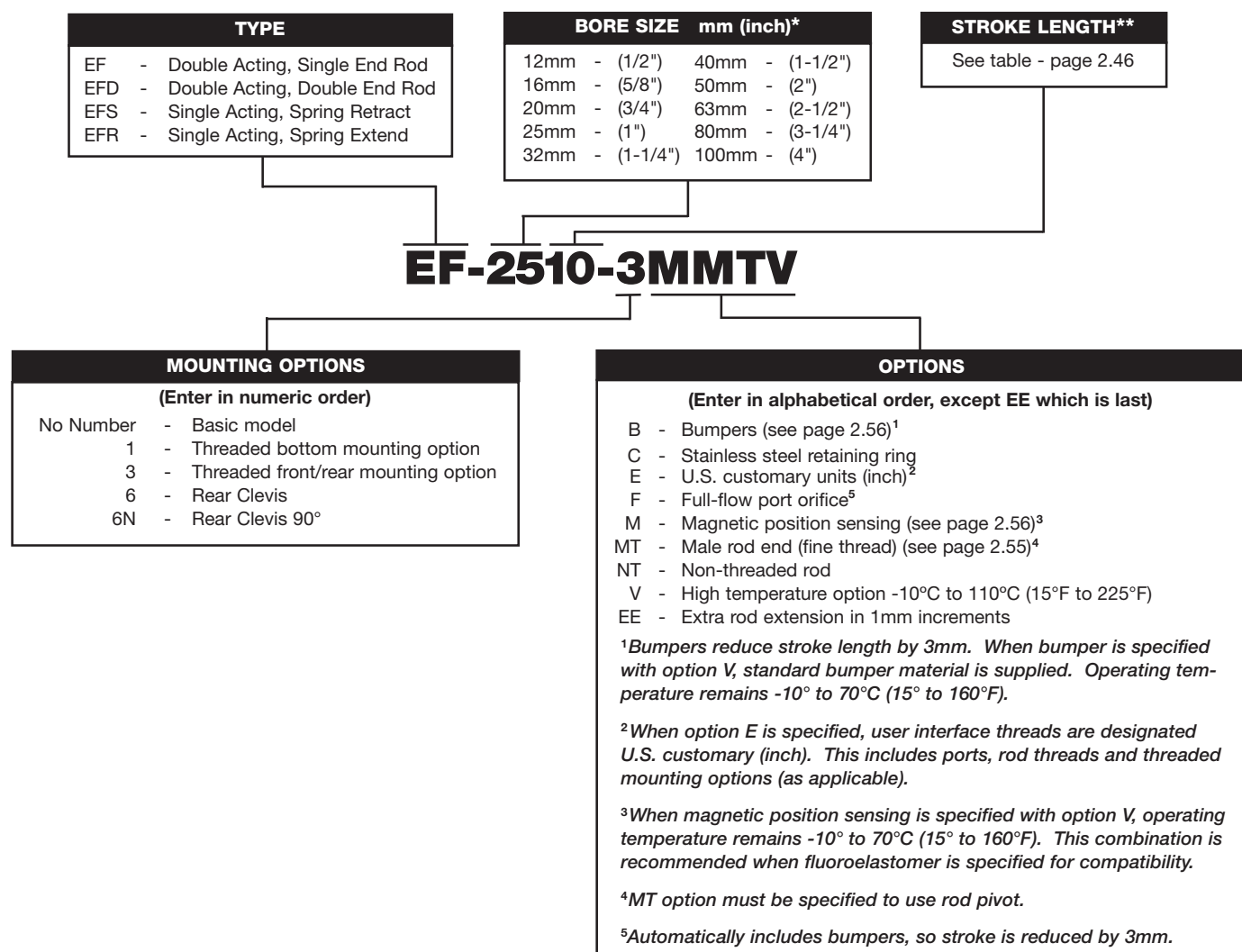
FEATURES AND ADVANTAGES

- PTFE-impregnated, hard anodized aluminum body provides superior wear resistance. Expected service life is 2500 kilometers.
- Very compact; dimensionally-interchangeable with similar compact extruded aluminum body cylinders.
- Very low profile, compact switch slides into groove within cylinder geometry.
- EF1 cylinders are available in four models: double acting, single or double rod end; and single acting, spring return or extend, and EF2 cylinders are available in double acting, non-rotating.
- NEW!! EFD T cylinders are now available as a double acting, double ended, non-rotating rod cylinder to provide an additional operation feature from the cylinder rear.
- Both models are available in ten bore sizes from 12mm to 100mm.
- Wide variety of standard stroke lengths in 5mm increments; additional stroke lengths available.
- Standard cylinder is completely metric in design; with Option -E, threaded mounting options, rod threads and ports are in U.S. customary units (inch).
- Mounting options include threaded bottom mounting and threaded front/rear mounting option.
- Options include bumpers, ports and threaded mounting option and rod threads in U.S. customary units, magnetic position sensing, and high temperature seals.
- NEW!! X option for EFT and EFD T cylinders only. This option increases stability by at least two times and up to 23 times depending on bore size. In addition, the X option more than doubles the maximum cylinder side load and moment!

Bimba EF1 Cylinders

How to Order

The Model Number for all EF1 cylinders consists of three alphanumeric clusters. These designate type, bore size and stroke length, and options. Please refer to the charts below for an example of Model Number EF-2510-3MMTV. This is a 25mm bore, double acting, single end rod cylinder, with metric threads and ports, 10mm of stroke, threaded front/rear mounting holes, magnetic position sensing, male rod end and high temperature option.



Please note that throughout all catalog charts, metric measurements are shown first and U.S. customary units (inches) are in parentheses.

*NOTE: Numbers in parentheses are the equivalent bore size in inches and listed FOR REFERENCE ONLY. DO NOT use for model designation.

**When stroke length exceeds 30mm, a threaded mounting option should be considered. Mounting bolts that span the entire cylinder length may not be readily available.

Bimba EF1 Cylinders

Engineering Specifications

Operating Medium:	Air
Maximum Operating Pressure:	10 bar (140 psi)
Ambient and Fluid Temperature:	-10° to 70°C (15° to 160°F)
Lubrication:	PTFE impregnated grease
Standard Rod End:	Female
Stroke Tolerance:	12-50mm bore: ± .6mm (.025 inch) 63-100mm bore: ± .8mm (.030 inch)
Cylinder Mounting (Standard):	Through hole with counterbores both ends
Cylinder Mounting (Optional):	Front and Rear threaded Side mount threaded Rear Clevis
Expected Service Life:	2500 kilometers (1500 miles)*

*For filtered, lubricated air, no-load conditions; if unlubricated, life is approximately 1/3.

Maximum Side Loads kg-Force (lb)

Bore	Stroke Length					
	5mm	10mm	15mm	20mm	25mm	30mm
12mm (1/2")	0.27 (0.60)	0.22 (0.49)	0.19 (0.41)	0.16 (0.35)	0.14 (0.31)	0.12 (0.27)
16mm (5/8")	0.33 (0.73)	0.27 (0.59)	0.23 (0.50)	0.20 (0.43)	0.17 (0.38)	0.15 (0.34)
20mm (3/4")	0.34 (0.74)	0.27 (0.60)	0.23 (0.51)	0.20 (0.44)	0.18 (0.39)	0.16 (0.35)
25mm (1")	0.54 (1.18)	0.45 (0.99)	0.38 (0.85)	0.34 (0.74)	0.30 (0.66)	0.27 (0.59)
32mm (1-1/4")	1.28 (2.81)	1.08 (2.38)	0.94 (2.07)	0.83 (1.83)	0.74 (1.64)	0.67 (1.48)
40mm (1-1/2")	2.27 (4.99)	1.97 (4.34)	1.75 (3.84)	1.57 (3.44)	1.42 (3.12)	1.30 (2.85)
50mm (2")	N/A	2.40 (5.29)	2.13 (4.69)	1.92 (4.22)	1.74 (3.83)	1.60 (3.51)
63mm (2-1/2")	N/A	3.18 (6.99)	2.85 (6.27)	2.58 (5.69)	2.36 (5.20)	2.18 (4.80)
80mm (3-1/4")	N/A	5.94 (13.06)	5.41 (11.91)	4.97 (10.94)	4.60 (10.12)	4.28 (9.41)
100mm (4")	N/A	9.14 (20.10)	8.45 (18.58)	7.85 (17.28)	7.34 (16.14)	6.88 (15.15)

Bore	Stroke Length					
	35mm	40mm	45mm	50mm	75mm	100mm
12mm (1/2")	0.11 (0.25)	0.10 (0.23)	N/A	N/A	N/A	N/A
16mm (5/8")	0.14 (0.30)	0.13 (0.28)	N/A	N/A	N/A	N/A
20mm (3/4")	0.14 (0.32)	0.13 (0.29)	0.12 (0.27)	0.11 (0.25)	N/A	N/A
25mm (1")	0.24 (0.54)	0.22 (0.49)	0.21 (0.46)	0.19 (0.42)	N/A	N/A
32mm (1-1/4")	0.61 (1.35)	0.57 (1.25)	0.52 (1.15)	0.49 (1.07)	0.36 (0.80)	0.29 (0.64)
40mm (1-1/2")	1.19 (2.63)	1.11 (2.44)	1.03 (2.27)	0.97 (2.12)	0.73 (1.61)	0.59 (1.30)
50mm (2")	1.47 (3.24)	1.37 (3.01)	1.27 (2.80)	1.19 (2.63)	0.91 (2.00)	0.73 (1.61)
63mm (2-1/2")	2.02 (4.45)	1.88 (4.15)	1.76 (3.88)	1.66 (3.65)	1.28 (2.81)	1.04 (2.29)
80mm (3-1/4")	4.00 (8.79)	3.75 (8.25)	3.53 (7.78)	3.34 (7.35)	2.62 (5.77)	2.16 (4.75)
100mm (4")	6.48 (14.27)	6.13 (13.48)	5.81 (12.78)	5.52 (12.15)	4.43 (9.74)	3.69 (8.13)

Bimba EF 1 Cylinders

Theoretical Cylinder Forces

FORCE = Power Factor x Input Pressure

Bore	Direction	Power Factor* (When input pressure in bar)	Power Factor** (When input pressure in psi)
12mm (1/2")	Extend	1.1	(0.2)
	Retract	0.8	(0.1)
16mm (5/8")	Extend	2.0	(0.3)
	Retract	1.5	(0.2)
20mm (3/4")	Extend	3.1	(0.5)
	Retract	2.4	(0.4)
25mm (1")	Extend	4.9	(0.8)
	Retract	3.8	(0.6)
32mm (1-1/4")	Extend	8.0	(1.2)
	Retract	6.0	(0.9)
40mm (1-1/2")	Extend	12.6	(1.9)
	Retract	10.6	(1.6)
50mm (2")	Extend	19.6	(3.0)
	Retract	16.5	(2.6)
63mm (2-1/2")	Extend	31.2	(4.8)
	Retract	28.0	(4.3)
80mm (3-1/4")	Extend	50.3	(7.8)
	Retract	45.4	(7.0)
100mm (4")	Extend	78.5	(12.2)
	Retract	71.5	(11.1)

*Power Factor x bar = kg.

**Power Factor x psi = Pounds

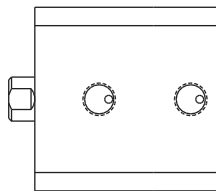
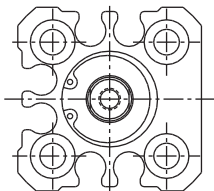
Bimba EF1 Cylinders

Enclosed Spring Forces

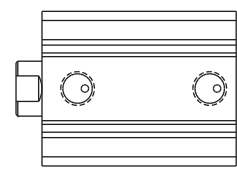
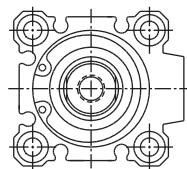
Action	Bore	Compressed Spring Force		Spring Rate	
		N	(lb)	N/mm	(lb/in)
Single Acting Spring Return	12mm (1/2")	12.8	(2.9)	0.8	(4.8)
	16mm (5/8")	16.0	(3.6)	1.0	(5.7)
	20mm (3/4")	18.1	(4.1)	1.2	(6.9)
	25mm (1")	21.4	(4.8)	1.1	(6.4)
	32mm (1-1/4")	22.2	(5.0)	0.8	(4.3)
	40mm (1-1/2")	33.1	(7.4)	0.9	(5.1)
	50mm (2")	53.8	(12.1)	1.2	(6.7)
	63mm (2-1/2")	89.0	(20.0)	2.1	(11.8)
	80mm (3-1/4")	106.8	(24.0)	2.3	(13.2)
	100mm (4")	N/A	(N/A)	N/A	(N/A)
Reverse Acting Spring Extend	12mm; 5mm stroke	10.9	(2.5)	1.6	(9.1)
	12mm; 10mm stroke	11.0	(2.5)	0.8	(4.6)
	16mm; 5mm stroke	20.7	(4.7)	3.4	(19.5)
	16mm; 10mm stroke	20.9	(4.7)	1.8	(10.3)
	20mm	27.3	(6.1)	2.3	(12.9)
	25mm	29.1	(6.5)	2.0	(11.2)
	32mm	26.6	(6.0)	0.9	(5.1)
	40mm	30.1	(6.8)	1.2	(7.1)
	50mm	81.9	(18.4)	2.9	(16.7)
	63mm; 20mm stroke	95.3	(21.4)	3.0	(16.7)
	63mm; 25mm stroke	95.3	(21.4)	2.4	(13.3)
	80mm; 20mm stroke	110.8	(24.9)	3.2	(17.8)
	80mm; 25mm stroke	110.9	(24.9)	2.5	(14.2)
	100mm	N/A	(N/A)	N/A	(N/A)

Body Styles

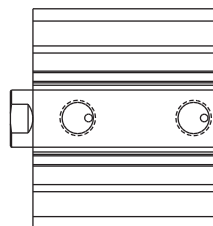
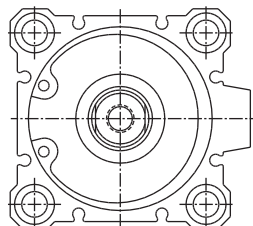
12mm Bore



16mm to 32mm Bore



40mm to 100mm Bore



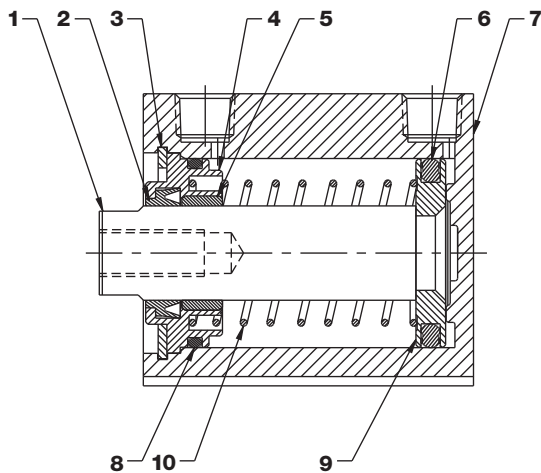
Bimba EF 1 Cylinders

Components

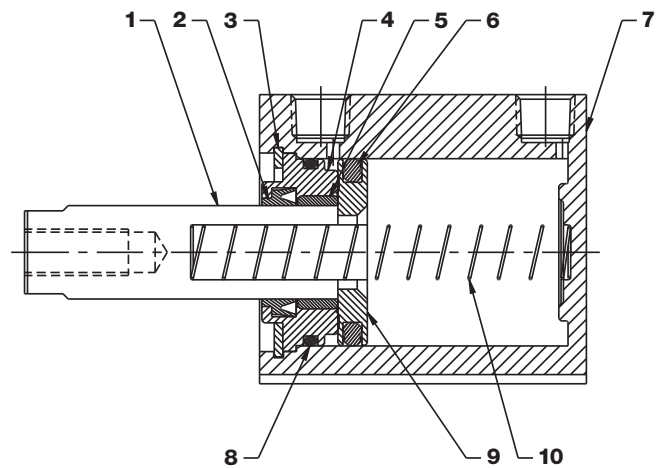
Part List

Part #	Description	Material
1	Rod	4301 (303) Stainless Steel
2	Rod Seal/Wiper	Nitrile (Standard) or Fluoroelastomer (High Temperature Option)
3	Retaining Ring	Zinc Plated Carbon Steel or Stainless Steel (optional)
4	Rod Guide	12-20mm: Bronze / 25-100mm: Anodized Aluminum
5	Bushing	12-20mm: Bronze / 25-100mm: Self Lubricating Nylon
6	Piston Seal	Nitrile (Standard) or Fluoroelastomer (High Temperature Option)
7	Cylinder Body	Polytetrafluoroethylene (PTFE) Impregnated Hard Anodized Aluminum
8	Rod Guide Seal	Nitrile (Standard) or Fluoroelastomer (High Temperature Option)
9	Piston	High Strength Aluminum Alloy
10	Spring	Corrosion Protected Music Wire

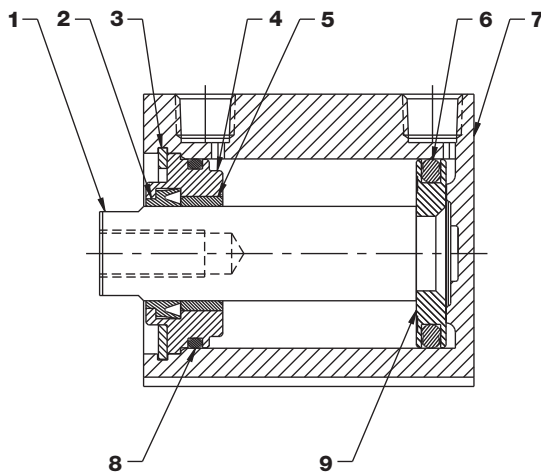
Single Acting/Spring Retract



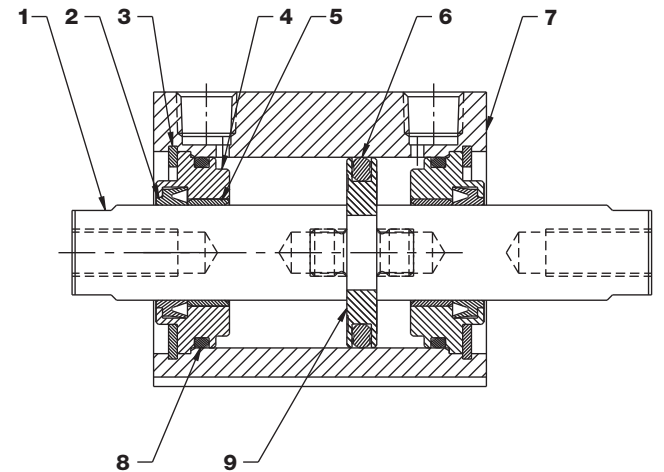
Single Acting/Spring Extend



Double Acting/Single Rod



Double Acting/Double Rod



Bimba EF1 Cylinders

Dimensions

Shown in millimeters (inches)

Double Acting/Single Rod

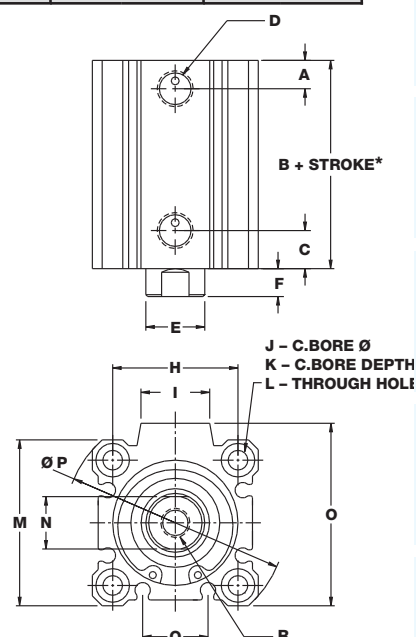
Bore	A	B	C	D	E	F	H
12mm (1/2")	3.8 (0.15)	17.0 (0.67)	8.9 (0.35)	M5 x 0.8 (#10-32)	6.0 (0.24)	3.5 (0.14)	15.5 (0.61)
16mm (5/8")	4.6 (0.18)	18.5 (0.73)	9.4 (0.37)	M5 x 0.8 (#10-32)	8.0 (0.31)	3.5 (0.14)	20.0 (0.79)
20mm (3/4")	4.8 (0.19)	19.5 (0.77)	9.4 (0.37)	M5 x 0.8 (#10-32)	10.0 (0.39)	4.5 (0.18)	25.5 (1.00)
25mm (1")	5.1 (0.20)	22.5 (0.89)	10.9 (0.43)	M5 x 0.8 (#10-32)	12.0 (0.47)	5.0 (0.20)	28.0 (1.10)
32mm (1-1/4")	7.1 (0.28)	23.0 (0.91)	10.4 (0.41)	G - 1/8 (NPT 1/8)	16.0 (0.63)	7.0 (0.28)	34.0 (1.34)
40mm (1-1/2")	7.4 (0.29)	29.5 (1.16)	13.2 (0.52)	G - 1/8 (NPT 1/8)	16.0 (0.63)	7.0 (0.28)	40.0 (1.57)
50mm (2")	9.4 (0.37)	30.5 (1.20)	13.7 (0.54)	G - 1/4 (NPT 1/4)	20.0 (0.79)	8.0 (0.31)	50.0 (1.97)
63mm (2-1/2")	9.7 (0.38)	36.0 (1.42)	15.7 (0.62)	G - 1/4 (NPT 1/4)	20.0 (0.79)	8.0 (0.31)	60.0 (2.36)
80mm (3-1/4")	11.7 (0.46)	43.5 (1.71)	17.8 (0.70)	G - 3/8 (NPT 3/8)	25.0 (0.98)	10.0 (0.39)	77.0 (3.03)
100mm (4")	12.2 (0.48)	53.0 (2.09)	24.4 (0.96)	G - 3/8 (NPT 3/8)	30.0 (1.18)	12.0 (0.47)	94.0 (3.70)

Bore	I	J	K	L	M	N	O
12mm (1/2")	N/A	6.1 (0.24)	3.5 (0.14)	3.5 (0.14)	25.0 (0.98)	5.0 (0.19)	25.0 (0.98)
16mm (5/8")	8.7 (0.34)	6.5 (0.26)	3.5 (0.14)	3.5 (0.14)	29.0 (1.14)	6.0 (0.25)	29.0 (1.14)
20mm (3/4")	9.5 (0.37)	9.0 (0.35)	7.0 (0.28)	5.5 (0.22)	36.0 (1.42)	8.0 (0.31)	36.0 (1.42)
25mm (1")	10.3 (0.41)	9.0 (0.35)	7.0 (0.28)	5.5 (0.22)	40.0 (1.57)	10.0 (0.38)	40.0 (1.57)
32mm (1-1/4")	18.5 (0.73)	9.0 (0.35)	7.0 (0.28)	5.5 (0.22)	45.0 (1.77)	14.0 (0.56)	49.5 (1.95)
40mm (1-1/2")	17.3 (0.68)	9.0 (0.35)	7.0 (0.28)	5.5 (0.22)	52.0 (2.05)	14.0 (0.56)	57.0 (2.24)
50mm (2")	20.0 (0.79)	11.1 (0.44)	8.0 (0.31)	6.9 (0.27)	64.0 (2.52)	17.0 (0.69)	71.0 (2.80)
63mm (2-1/2")	20.0 (0.79)	14.1 (0.56)	10.5 (0.41)	8.8 (0.35)	77.0 (3.03)	17.0 (0.69)	84.0 (3.31)
80mm (3-1/4")	26.0 (1.02)	17.5 (0.69)	13.5 (0.53)	11.0 (0.43)	98.0 (3.86)	22.0 (0.88)	104.0 (4.09)
100mm (4")	26.0 (1.02)	17.5 (0.69)	13.5 (0.53)	11.0 (0.43)	117.0 (4.61)	27.0 (1.06)	123.5 (4.86)

Bore	P	Q	R
12mm (1/2")	32.0 (1.26)	5.3 (0.21)	M3 x 0.5 6H (#8-32 UNC-2B)
16mm (5/8")	38.0 (1.50)	7.8 (0.31)	M4 x 0.7 6H (#8-32 UNC-2B)
20mm (3/4")	47.0 (1.85)	10.5 (0.41)	M5 x 0.8 6H (#10-32 UNF-2B)
25mm (1")	52.0 (2.05)	11.5 (0.45)	M6 x 1.0 6H (1/4-28 UNF-2B)
32mm (1-1/4")	60.0 (2.36)	17.7 (0.70)	M8 x 1.25 6H (5/16-24 UNF-2B)
40mm (1-1/2")	69.0 (2.72)	24.5 (0.96)	M8 x 1.25 6H (3/8-24 UNF-2B)
50mm (2")	86.0 (3.39)	29.3 (1.16)	M10 x 1.5 6H (1/2-20 UNF-2B)
63mm (2-1/2")	103.0 (4.06)	29.1 (1.15)	M10 x 1.5 6H (1/2-20 UNF-2B)
80mm (3-1/4")	132.0 (5.20)	28.1 (1.11)	M16 x 2.0 6H (5/8-18 UNF-2B)
100mm (4")	156.0 (6.14)	32.3 (1.27)	M20 x 2.5 6H (3/4-16 UNF-2B)

*See page 2.56 for overall body length with MRS option.

When option E is specified, user interface threads are designated U.S. customary (inch). This includes ports, rod threads and threaded mounting options (as applicable).



Bimba EF1 Cylinders

Dimensions

Shown in millimeters (inches)

Double Acting/Double Rod

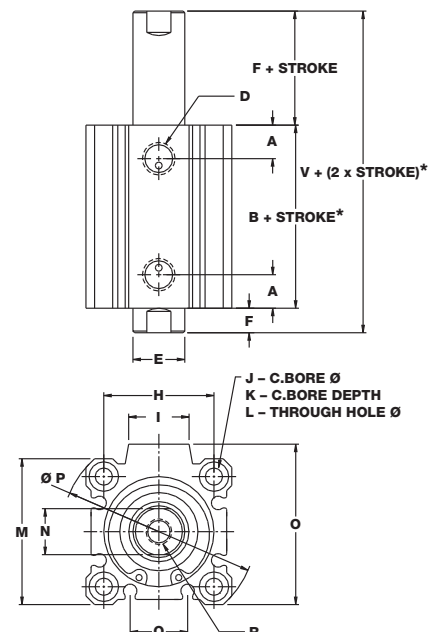
Bore	A	B	D	E	F	H	I
12mm (1/2")	10.6 (0.42)	25.2 (0.99)	M5 x 0.8 (#10-32)	6.0 (0.24)	3.5 (0.14)	15.5 (0.61)	N/A
16mm (5/8")	10.7 (0.42)	26.0 (1.03)	M5 x 0.8 (#10-32)	8.0 (0.31)	3.5 (0.14)	20.0 (0.79)	8.7 (0.34)
20mm (3/4")	10.1 (0.40)	26.0 (1.03)	M5 x 0.8 (#10-32)	10.0 (0.39)	4.5 (0.18)	25.5 (1.00)	9.5 (0.37)
25mm (1")	11.2 (0.44)	29.0 (1.14)	M5 x 0.8 (#10-32)	12.0 (0.47)	5.0 (0.20)	28.0 (1.10)	10.3 (0.41)
32mm (1-1/4")	8.9 (0.35)	30.5 (1.20)	G - 1/8 (NPT 1/8)	16.0 (0.63)	7.0 (0.28)	34.0 (1.34)	18.5 (0.73)
40mm (1-1/2")	13.1 (0.52)	40.0 (1.58)	G - 1/8 (NPT 1/8)	16.0 (0.63)	7.0 (0.28)	40.0 (1.57)	17.3 (0.68)
50mm (2")	12.2 (0.48)	40.5 (1.60)	G - 1/4 (NPT 1/4)	20.0 (0.79)	8.0 (0.31)	50.0 (1.97)	20.0 (0.79)
63mm (2-1/2")	12.8 (0.50)	42.0 (1.66)	G - 1/4 (NPT 1/4)	20.0 (0.79)	8.0 (0.31)	60.0 (2.36)	20.0 (0.79)
80mm (3-1/4")	14.4 (0.57)	51.0 (2.01)	G - 3/8 (NPT 3/8)	25.0 (0.98)	10.0 (0.39)	77.0 (3.03)	26.0 (1.02)
100mm (4")	18.3 (0.72)	60.5 (2.32)	G - 3/8 (NPT 3/8)	30.0 (1.18)	12.0 (0.47)	94.0 (3.70)	26.0 (1.02)

Bore	J	K	L	M	N	O	P
12mm (1/2")	6.1 (0.24)	3.5 (0.14)	3.5 (0.14)	25.0 (0.98)	5.0 (0.19)	25.0 (0.98)	32.0 (1.26)
16mm (5/8")	6.5 (0.26)	3.5 (0.14)	3.5 (0.14)	29.0 (1.14)	6.0 (0.25)	29.0 (1.14)	38.0 (1.50)
20mm (3/4")	9.0 (0.35)	7.0 (0.28)	5.5 (0.22)	36.0 (1.42)	8.0 (0.31)	36.0 (1.42)	47.0 (1.85)
25mm (1")	9.0 (0.35)	7.0 (0.28)	5.5 (0.22)	40.0 (1.57)	10.0 (0.38)	40.0 (1.57)	52.0 (2.05)
32mm (1-1/4")	9.0 (0.35)	7.0 (0.28)	5.5 (0.22)	45.0 (1.77)	14.0 (0.56)	49.5 (1.95)	60.0 (2.36)
40mm (1-1/2")	9.0 (0.35)	7.0 (0.28)	5.5 (0.22)	52.0 (2.05)	14.0 (0.56)	57.0 (2.24)	69.0 (2.72)
50mm (2")	11.1 (0.44)	8.0 (0.31)	6.9 (0.27)	64.0 (2.52)	17.0 (0.69)	71.0 (2.80)	86.0 (3.39)
63mm (2-1/2")	14.1 (0.56)	10.5 (0.41)	8.8 (0.35)	77.0 (3.03)	17.0 (0.69)	84.0 (3.31)	103.0 (4.06)
80mm (3-1/4")	17.5 (0.69)	13.5 (0.53)	11.0 (0.43)	98.0 (3.86)	22.0 (0.88)	104.0 (4.09)	132.0 (5.20)
100mm (4")	17.5 (0.69)	13.5 (0.53)	11.0 (0.43)	117.0 (4.61)	27.0 (1.06)	123.5 (4.86)	156.0 (6.14)

Bore	Q	R	V
12mm (1/2")	5.3 (0.21)	M3 x 0.5 6H (#8-32 UNC-2B)	32.4 (1.27)
16mm (5/8")	7.8 (0.31)	M4 x 0.7 6H (#8-32 UNC-2B)	33.2 (1.31)
20mm (3/4")	10.5 (0.41)	M5 x 0.8 6H (#10-32 UNF-2B)	35.2 (1.39)
25mm (1")	11.5 (0.45)	M6 x 1.0 6H (1/4-28 UNF-2B)	39.2 (1.54)
32mm (1-1/4")	17.7 (0.70)	M8 x 1.25 6H (5/16-24 UNF-2B)	44.7 (1.76)
40mm (1-1/2")	24.5 (0.96)	M8 x 1.25 6H (3/8-24 UNF-2B)	54.2 (2.14)
50mm (2")	29.3 (1.16)	M10 x 1.5 6H (1/2-20 UNF-2B)	56.3 (2.22)
63mm (2-1/2")	29.1 (1.15)	M10 x 1.5 6H (1/2-20 UNF-2B)	57.8 (2.28)
80mm (3-1/4")	28.1 (1.11)	M16 x 2.0 6H (5/8-18 UNF-2B)	70.8 (2.79)
100mm (4")	32.3 (1.27)	M20 x 2.5 6H (3/4-16 UNF-2B)	84.3 (3.26)

*See page 2.56 for overall body length with MRS option.

When option E is specified, user interface threads are designated U.S. customary (inch). This includes ports, rod threads and threaded mounting options (as applicable).



Bimba EF 1 Cylinders

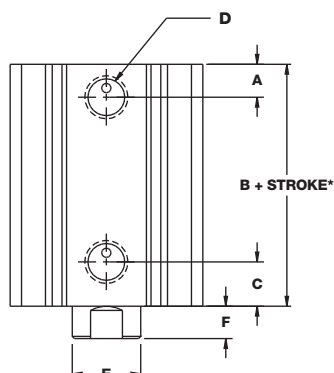
Dimensions

Shown in millimeters (inches)

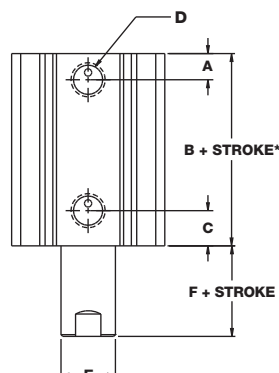
Spring Retract/Spring Extend

Bore	A	B	C	D	E	F
12mm (1/2")	3.8 (0.15)	17.0 (0.67)	8.9 (0.35)	M5 x 0.8 (#10-32)	6.0 (0.24)	3.5 (0.14)
16mm (5/8")	4.6 (0.18)	18.5 (0.73)	9.4 (0.37)	M5 x 0.8 (#10-32)	8.0 (0.31)	3.5 (0.14)
20mm (3/4")	4.8 (0.19)	19.5 (0.77)	9.4 (0.37)	M5 x 0.8 (#10-32)	10.0 (0.39)	4.5 (0.18)
25mm (1")	5.1 (0.20)	22.5 (0.89)	10.9 (0.43)	M5 x 0.8 (#10-32)	12.0 (0.47)	5.0 (0.20)
32mm (1-1/4")	7.1 (0.28)	23.0 (0.91)	10.4 (0.41)	G - 1/8 (NPT 1/8)	16.0 (0.63)	7.0 (0.28)
40mm (1-1/2")	7.4 (0.29)	29.5 (1.16)	13.2 (0.52)	G - 1/8 (NPT 1/8)	16.0 (0.63)	7.0 (0.28)
50mm (2")	9.4 (0.37)	30.5 (1.20)	13.7 (0.54)	G - 1/4 (NPT 1/4)	20.0 (0.79)	8.0 (0.31)
63mm (2-1/2")	9.7 (0.38)	36.0 (1.42)	15.7 (0.62)	G - 1/4 (NPT 1/4)	20.0 (0.79)	8.0 (0.31)
80mm (3-1/4")	11.7 (0.46)	43.5 (1.71)	17.8 (0.70)	G - 3/8 (NPT 3/8)	25.0 (0.98)	10.0 (0.39)

Spring Retract (Model EFS)



Spring Extend (Model EFR)



*See page 2.56 for overall body length with MRS option.

When option E is specified, user interface threads are designated U.S. customary (inch).
This includes ports, rod threads and threaded mounting options (as applicable).

Weights

Bore	Approximate Base Weight of Cylinder gram-force (oz.)	Weight Adder per 5mm of Stroke gram-force (oz.)
12mm (1/2")	21.8 (0.77)	5.6 (0.20)
16mm (5/8")	38.7 (1.36)	8.0 (0.28)
20mm (3/4")	46.4 (1.64)	11.5 (0.41)
25mm (1")	73.1 (2.58)	14.6 (0.52)
32mm (1-1/4")	113.3 (4.00)	20.9 (0.74)
40mm (1-1/2")	181.4 (6.40)	21.3 (0.75)
50mm (2")	294.0 (10.37)	33.6 (1.19)
63mm (2-1/2")	484.5 (17.09)	40.7 (1.44)
80mm (3-1/4")	885.2 (31.23)	62.6 (2.21)
100mm (4")	1885.9 (66.52)	110.1 (3.89)

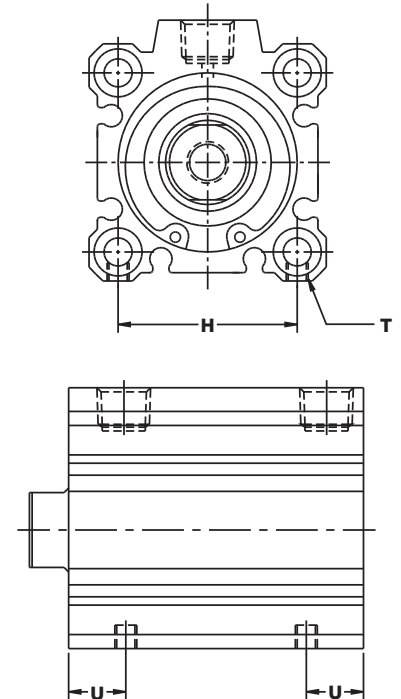
Bimba EF 1 Cylinders

Mounting Options

Threaded Bottom Mount (-1) (EF1 models only)

Bore	H	T	U
12mm (1/2")	15.5 (0.61)	M4 x 0.7 6H (8-32 UNC-2B)	6.6 (0.26)
16mm (5/8")	20.0 (0.79)	M4 x 0.7 6H (8-32 UNC-2B)	6.6 (0.26)
20mm (3/4")	25.5 (1.00)	M6 x 1.0 6H (1/4-20 UNC-2B)	11.2 (0.44)
25mm (1")	28.0 (1.10)	M6 x 1.0 6H (1/4-20 UNC-2B)	11.2 (0.44)
32mm (1-1/4")	34.0 (1.34)	M6 x 1.0 6H (1/4-20 UNC-2B)	11.2 (0.44)
40mm (1-1/2")	40.0 (1.57)	M6 x 1.0 6H (1/4-20 UNC-2B)	11.2 (0.44)
50mm (2")	50.0 (1.97)	M8 x 1.25 6H (5/16-18 UNC-2B)	13.0 (0.51)
63mm (2-1/2")	60.0 (2.36)	M10 x 1.5 6H (7/16-14 UNC-2B)	16.8 (0.66)
80mm (3-1/4")	77.0 (3.03)	M12 x 1.75 6H (1/2-13 UNC-2B)	20.8 (0.82)
100mm (4")	94.0 (3.70)	M12 x 1.75 6H (1/2-13 UNC-2B)	20.8 (0.82)

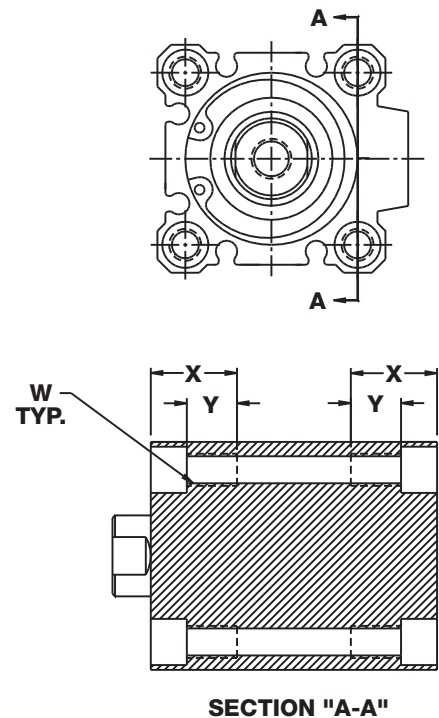
Note: On the following models, only the front set of threaded bottom mounting holes is provided; EF-205, EF-2010, EF-255, EF-325, EF-8010.



Threaded Front/Rear Mount (-3)

Bore	W	X	Y
12mm (1/2")	M4 X 0.7 (8-32 UNC)	10.5 (0.41)	7.0 (0.28)
16mm (5/8")	M4 X 0.7 (8-32 UNC)	10.5 (0.41)	7.0 (0.28)
20mm (3/4")	M6 X 1.0 (1/4-20 UNC)	17.0 (0.67)	10.0 (0.39)
25mm (1")	M6 X 1.0 (1/4-20 UNC)	17.0 (0.67)	10.0 (0.39)
32mm (1-1/4")	M6 X 1.0 (1/4-20 UNC)	17.0 (0.67)	10.0 (0.39)
40mm (1-1/2")	M6 X 1.0 (1/4-20 UNC)	17.0 (0.67)	10.0 (0.39)
50mm (2")	M8 X 1.25 (5/16-18 UNC)	22.0 (0.87)	14.0 (0.55)
63mm (2-1/2")	M10 X 1.5 (7/16-14 UNC)	28.5 (1.12)	18.0 (0.71)
80mm (3-1/4")	M12 X 1.75 (1/2-13 UNC)	35.6 (1.40)	22.0 (0.87)
100mm (4")	M12 X 1.75 (1/2-13 UNC)	35.6 (1.40)	22.0 (0.87)

Note: On EFT models, there are two threaded holes per end, not four.



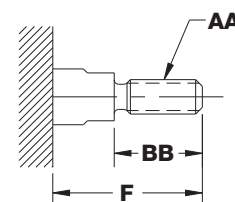
SECTION "A-A"

Bimba EF 1 Cylinders

Options

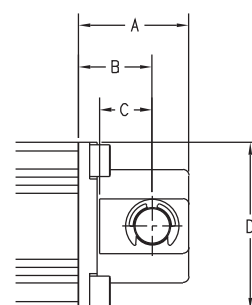
Male Rod End (MT)

Bore	Standard			With Option E		
	AA	BB	F	AA	BB	F
12mm (1/2")	M5 X 0.80	10.5 (0.41)	14.0 (0.55)	#8-32 UNC	8.0 (0.31)	11.5 (0.45)
16mm (5/8")	M6 X 1.00	12.0 (0.47)	15.5 (0.61)	#8-32 UNC	8.0 (0.31)	11.5 (0.45)
20mm (3/4")	M8 X 1.25	14.0 (0.55)	18.5 (0.73)	#10-32 UNF	8.0 (0.31)	12.5 (0.49)
25mm (1")	M10 X 1.25	17.5 (0.69)	22.5 (0.89)	1/4-28 UNF	9.5 (0.37)	14.5 (0.57)
32mm (1-1/4")	M14 X 1.5	23.5 (0.93)	28.5 (1.12)	5/16-24 UNF	12.7 (0.50)	19.7 (0.78)
40mm (1-1/2")	M14 X 1.5	23.5 (0.93)	28.5 (1.12)	3/8-24 UNF	16.0 (0.63)	23.0 (0.91)
50mm (2")	M18 X 1.5	28.5 (1.12)	33.5 (1.32)	1/2-20 UNF	19.5 (0.77)	27.5 (1.08)
63mm (2-1/2")	M18 X 1.5	28.5 (1.12)	33.5 (1.32)	1/2-20 UNF	19.5 (0.77)	27.5 (1.08)
80mm (3-1/4")	M22 X 1.5	35.5 (1.40)	43.5 (1.71)	5/8-18 UNF	25.5 (1.00)	35.5 (1.40)
100mm (4")	M26 X 1.5	35.5 (1.40)	43.5 (1.71)	3/4-16 UNF	28.5 (1.12)	40.5 (1.59)

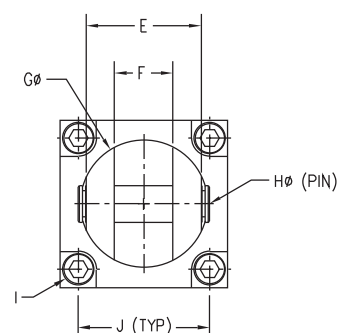


Rear Clevis Mount (6, 6N)

Stroke	A	B	C	D	E	F
12m	20 (0.79)	14 (0.55)	7 (0.28)	25 (0.98)	10 (0.39)	5 (0.21)
16m	21 (0.83)	15 (0.59)	10 (0.39)	29 (1.14)	12 (0.47)	7 (0.27)
20m	27 (1.06)	18 (0.71)	12 (0.47)	36 (1.41)	16 (0.62)	8 (0.33)
25m	30 (1.18)	20 (0.79)	14 (0.55)	40 (1.57)	20 (0.78)	10 (0.41)
32m	30 (1.18)	20 (0.79)	14 (0.55)	45 (1.77)	36 (1.41)	18 (0.72)
40m	32 (1.26)	22 (0.87)	14 (0.55)	52 (2.04)	36 (1.41)	18 (0.72)
50m	42 (1.65)	28 (1.10)	20 (0.79)	64 (2.52)	44 (1.72)	22 (0.87)
63m	44 (1.73)	30 (1.18)	20 (0.79)	77 (3.03)	44 (1.72)	22 (0.87)
80m	56 (2.21)	38 (1.50)	27 (1.06)	98 (3.85)	56 (2.20)	28 (1.11)
100m	67 (2.64)	45 (1.77)	31 (1.22)	117 (4.60)	64 (2.51)	32 (1.27)



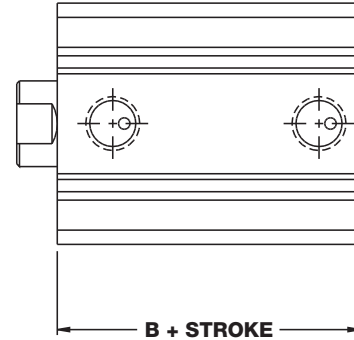
Bore	G	HØ (PIN)	I	J
12mm	13 (0.51)	5 (0.197)	M4x0.7 (#8-32 UNC)	15.5 (0.61)
16mm	15 (0.58)	5 (0.197)	M4x0.7 (#8-32 UNC)	20 (0.79)
20mm	21 (0.82)	8 (0.315)	M6x1.0 (1/4-20 UNC)	25.5 (1.00)
25mm	22 (0.85)	10 (0.394)	M6x1.0 (1/4-20 UNC)	28 (1.10)
32mm	39 (1.53)	10 (0.394)	M6x1.0 (1/4-20 UNC)	34 (1.34)
40mm	39 (1.53)	10 (0.394)	M6x1.0 (1/4-20 UNC)	40 (1.58)
50mm	49 (1.91)	14 (0.551)	M8x1.25 (5/16-18 UNC)	50 (1.97)
63mm	49 (1.91)	14 (0.551)	M10x1.5 (7/16-14 UNC)	60 (2.36)
80mm	62 (2.44)	18 (0.709)	M12x1.75 (1/2-13 UNC)	77 (3.03)
100mm	72 (2.84)	22 (0.866)	M12x1.75 (1/2-13 UNC)	94 (3.70)



Bimba EF 1 Cylinders

Magnetic Position Sensing (M) (Body Lengths With MRS Option)

Bore	B	
	Double Acting Single Rod	Double Acting Double Rod
12mm (1/2")	27.0 (1.06)	32.4 (1.28)
16mm (5/8")	28.5 (1.12)	36.0 (1.42)
20mm (3/4")	29.5 (1.16)	36.0 (1.42)
25mm (1")	32.5 (1.28)	39.0 (1.54)
32mm (1-1/4")	33.0 (1.30)	40.5 (1.59)
40mm (1-1/2")	39.5 (1.56)	50.0 (1.97)
50mm (2")	40.5 (1.59)	50.5 (1.99)
63mm (2-1/2")	46.0 (1.81)	52.0 (2.05)
80mm (3-1/4")	53.5 (2.11)	61.0 (2.40)
100mm (4")	63.0 (2.48)	70.5 (2.78)



Bumpers (Stroke reduction by model for all bores)

Model	Stroke Reduction mm (inches)
Double Acting Single Rod End Double Acting Double Rod End	3.0 (.12)
Single Acting Spring Retract Reverse Acting Spring Extend	1.5 (.06)

Extruded Flat Repair Kits

For bore sizes of 12, 16, and 20, each Extruded Flat Basic Kit includes the appropriate rod guide, rod seal, piston seals, cylinder, body seals, and instructions. For larger bore sizes (25mm and up), a rod bushing is included instead of the rod guide. Please note that EF repair kits will work on EF2 cylinders.

To order, please provide the correct bore code in the kit part number blank. Specialty seals are designated by their suffix option.

Repair Kit
K-B-EF-__
K-B-EFD-__
K-B-EF-__-V
K-B-EFD-__-V

Bimba EF1 Cylinders

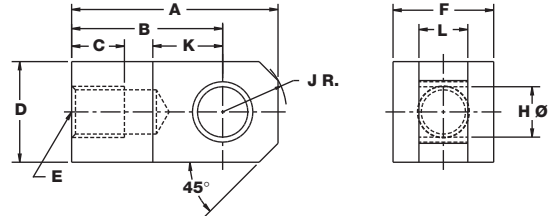
Accessories

Rod Pivot List Prices

Model Number	Bore	List Price
RP(M,E)K-12	12mm (1/2")	\$26.35
RP(M,E)K-16	16mm (5/8")	27.90
RP(M,E)K-20	20mm (3/4")	31.75
RP(M,E)K-25	25mm (1")	33.65
RP(M,E)K-32	32mm (1-1/4")	35.85
RP(M,E)K-40	40mm (1-1/2")	
RP(M,E)K-50	50mm (2")	37.50
	63mm (2-1/2")	
RP(M,E)K-80	80mm (3-1/4")	38.45
RP(M,E)K-100	100mm (4")	40.05

Note: To use Rod Pivot, cylinder must be specified with male thread option (MT).

For inch series Rod Pivot Kits, change the third digit from an M to an E.
For example: RPKM-32 is a metric size / RPEK-32 is a U.S. customary size.

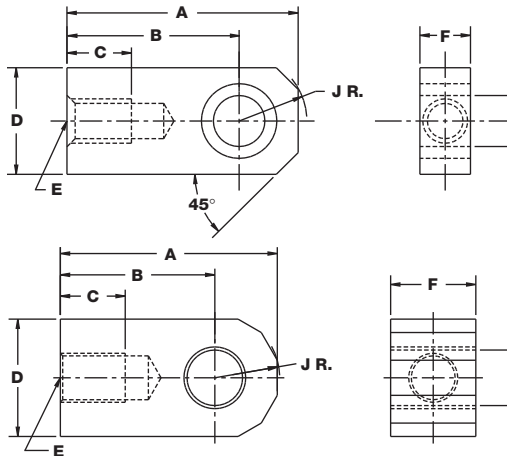


Metric Small Bore Rod Pivot (for 12mm to 63mm bore cylinders)

RPMK-12, RPMK-16, RPMK-20, RPMK-25, RPMK-32, RPMK-40, RPMK-50

U.S. Customary Small Bore Rod Pivot (for 12mm to 63mm bore cylinders)

RPEK-12, RPEK-16, RPEK-20, RPEK-25, RPEK-32, RPEK-40, RPEK-50



Metric and U.S. Customary Large Bore Rod Pivot (for 80mm and 100mm bore cylinders)

RPMK-80, RPEK-80, RPMK-100, RPEK-100

Rod Pivot Dimensions

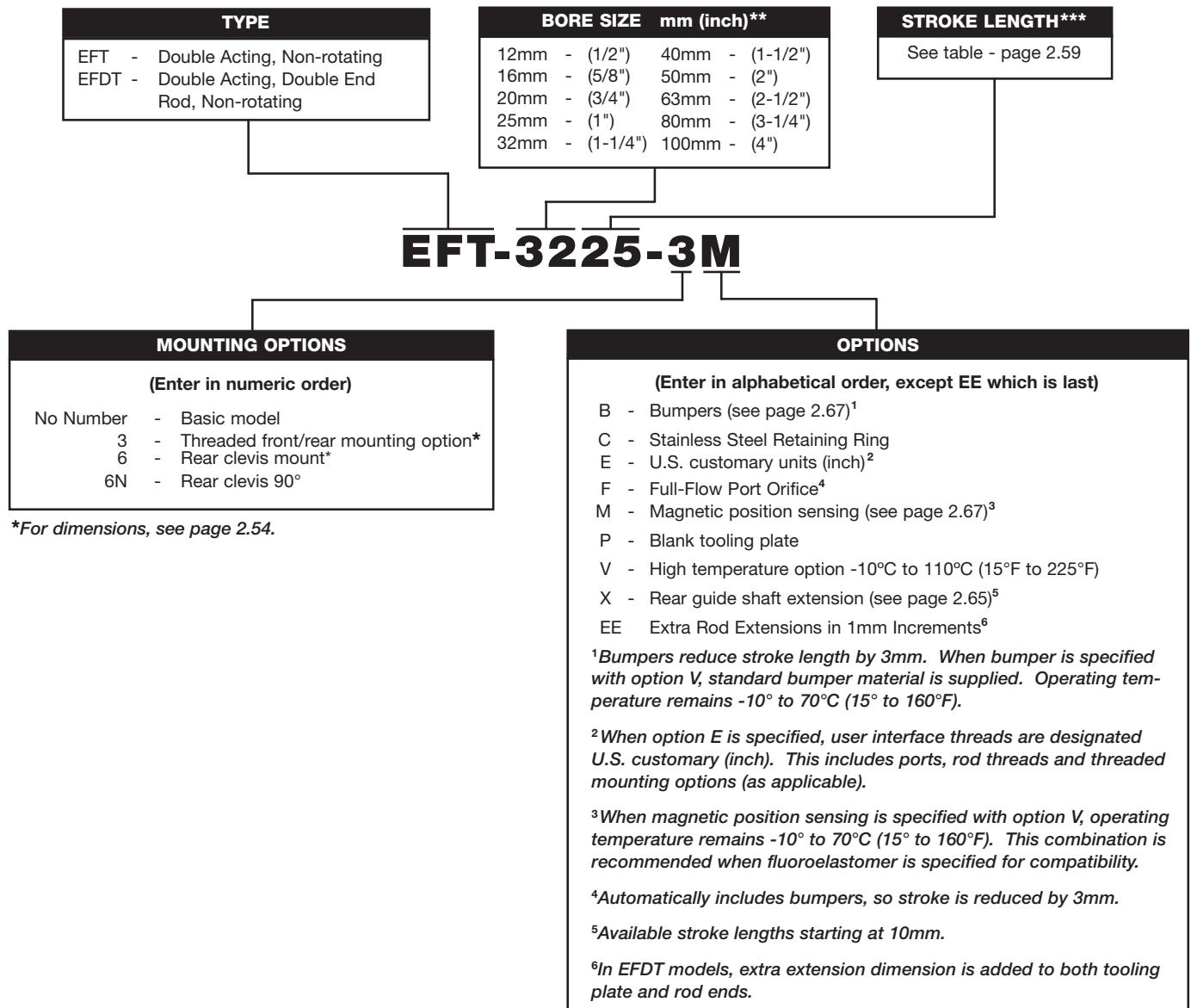
Model Number	Bore	A	B	C	D	E
RP(M,E)K-12	12mm (1/2")	21.5 (0.85)	16.0 (0.63)	6.0 (0.24)	10.0 (0.39)	M5 x 0.8 (# 8-32 UNC)
RP(M,E)K-16	16mm (5/8")	32.0 (1.26)	25.0 (0.98)	8.0 (0.24)	12.0 (0.47)	M6 x 1.0 (# 8-32 UNC)
RP(M,E)K-20	20mm (3/4")	34.0 (1.34)	25.0 (0.98)	8.5 (0.24)	15.9 (0.63)	M8 x 1.25 (# 10-32 UNF)
RP(M,E)K-25	25mm (1")	41.0 (1.61)	30.0 (1.18)	10.5 (0.32)	20.0 (0.79)	M10 x 1.25 (1/4-28 UNF)
RP(M,E)K-32	32mm (1-1/4")	40.5 (1.59)	30.0 (1.18)	14.0 (0.35)	22.0 (0.87)	M14 x 1.5 (5/16-24 UNF)
RP(M,E)K-40	40mm (1-1/2")	40.5 (1.59)	30.0 (1.18)	14.0 (0.43)	22.0 (0.87)	M14 x 1.5 (3/8-24 UNF)
RP(M,E)K-50	50mm (2") 63mm (2-1/2")	53.8 (2.12)	40.0 (1.58)	18.0 (0.71)	28.0 (1.10)	M18 x 1.5 (1/2-20 UNF)
RP(M,E)K-80	80mm (3-1/4")	70.2 (2.77)	50.0 (1.97)	21.0 (0.83)	38.0 (1.50)	M22 x 1.5 (5/8-18 UNF)
RP(M,E)K-100	100mm (4")	77.9 (3.07)	55.0 (2.17)	21.0 (0.83)	44.0 (1.73)	M26 x 1.5 (3/4-16 UNF)

Model Number	Bore Size	F	H	J	K	L
RP(M,E)K-12	12mm (1/2")	10.0 (0.19)	7.0 (0.251)	6.2 (0.25)	6.9 N/A	4.7 N/A
RP(M,E)K-16	16mm (5/8")	12.0 (0.24)	7.0 (0.251)	7.8 (0.31)	13.9 N/A	6.2 N/A
RP(M,E)K-20	20mm (3/4")	15.9 (0.30)	10.0 (0.376)	10.2 (0.41)	11.4 N/A	7.7 N/A
RP(M,E)K-25	25mm (1")	20.0 (0.38)	12.0 (0.469)	12.6 (0.50)	13.9 N/A	9.7 N/A
RP(M,E)K-32	32mm (1-1/4")	22.0 (0.69)	12.0 (0.469)	11.9 (0.47)	13.9 N/A	17.6 N/A
RP(M,E)K-40	40mm (1-1/2")	22.0 (0.69)	12.0 (0.469)	11.9 (0.47)	13.9 N/A	17.6 N/A
RP(M,E)K-50	50mm (2") 63mm (2-1/2")	28.0 (0.85)	16.0 (0.594)	15.9 (0.63)	19.9 N/A	21.6 N/A
RP(M,E)K-80	80mm (3-1/4")	27.6 (1.09)	20.0 (0.875)	21.0 (0.83)	N/A	N/A
RP(M,E)K-100	100mm (4")	31.6 (1.24)	25.0 (1.000)	24.0 (0.94)	N/A	N/A

Bimba EF2 Cylinders

How to Order

The Model Number for the EF2 cylinder consists of three alphanumeric clusters. These designate type, bore size and stroke length, and options. Please refer to the charts below for an example of Model Number EFT-3225-3M. This is a 32mm bore, double acting, guided cylinder with metric threads and ports, 25mm stroke, threaded front/rear mounting holes, and magnetic position sensing.



*For dimensions, see page 2.54.

Please note that throughout all catalog charts, metric measurements are shown first and U.S. customary units (inches) are in parentheses.

**NOTE: Numbers in parentheses are the equivalent bore size in inches and listed FOR REFERENCE ONLY. DO NOT use for model designation.

***When stroke length exceeds 30mm, a threaded mounting option should be considered. Mounting bolts that span the entire cylinder length may not be readily available.

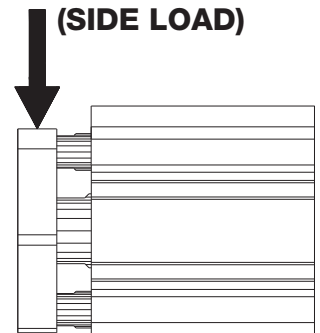
Bimba EF2 Cylinders

EFT Cylinders

Maximum Side Loads kg-Force (lb)

Bore	Stroke Length													
	5mm		10mm		15mm		20mm		25mm		30mm		35mm	
12mm (1/2")	1.79	(3.94)	1.47	(3.24)	1.25	(2.75)	1.08	(2.39)	0.96	(2.11)	0.86	(1.89)	N/A	
16mm (5/8")	2.60	(5.72)	2.16	(4.76)	1.85	(4.08)	1.62	(3.57)	1.44	(3.17)	1.30	(2.86)	N/A	
20mm (3/4")	5.09	(11.23)	4.36	(9.62)	3.82	(8.42)	3.39	(7.48)	3.06	(6.74)	2.78	(6.13)	2.55	(5.62)
25mm (1")	5.22	(11.50)	4.48	(9.88)	3.93	(8.66)	3.50	(7.71)	3.15	(6.94)	2.86	(6.32)	2.63	(5.80)
32mm (1-1/4")	5.54	(12.22)	4.80	(10.59)	4.24	(9.35)	3.80	(8.37)	3.44	(7.58)	3.14	(6.91)	2.89	(6.36)
40mm (1-1/2")	6.53	(14.40)	5.69	(12.55)	5.04	(11.12)	4.53	(9.98)	4.11	(9.06)	3.76	(8.28)	3.47	(7.64)
50mm (2")	N/A		8.94	(19.71)	8.03	(17.71)	7.30	(16.09)	6.68	(14.74)	6.17	(13.60)	5.73	(12.62)
63mm (2-1/2")	N/A		14.49	(31.95)	13.16	(29.01)	12.06	(26.58)	11.12	(24.51)	10.32	(22.76)	9.63	(21.23)
80mm (3-1/4")	N/A		23.59	(52.02)	21.70	(47.85)	20.09	(44.30)	18.71	(41.24)	17.50	(38.58)	16.43	(36.23)
100mm (4")	N/A		26.22	(57.80)	24.24	(53.45)	22.55	(49.71)	21.07	(46.46)	19.78	(43.61)	18.64	(41.08)

Bore	Stroke Length				
	40mm	45mm	50mm	75mm	100mm
12mm (1/2")	N/A	N/A	N/A	N/A	N/A
16mm (5/8")	N/A	N/A	N/A	N/A	N/A
20mm (3/4")	2.35 (5.19)	2.19 (4.82)	2.04 (4.50)	N/A	N/A
25mm (1")	2.43 (5.35)	2.26 (4.98)	2.11 (4.64)	N/A	N/A
32mm (1-1/4")	2.68 (5.90)	2.49 (5.48)	2.33 (5.13)	1.76 (3.89)	1.42 (3.13)
40mm (1-1/2")	3.22 (7.09)	3.00 (6.60)	2.80 (6.18)	2.13 (4.70)	1.72 (3.79)
50mm (2")	5.34 (11.78)	5.01 (11.03)	4.71 (10.39)	3.64 (8.02)	2.96 (6.53)
63mm (2-1/2")	9.03 (19.90)	8.49 (18.72)	8.02 (17.67)	6.27 (13.82)	5.15 (11.35)
80mm (3-1/4")	15.49 (34.16)	14.66 (32.32)	13.91 (30.66)	11.07 (24.40)	9.19 (20.27)
100mm (4")	17.61 (38.83)	16.70 (36.82)	15.88 (35.00)	12.74 (28.08)	10.63 (23.44)



Maximum Moments N-m (in-lb)

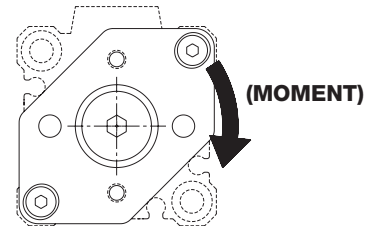
Bore	Stroke Length													
	5mm		10mm		15mm		20mm		25mm		30mm		35mm	
12mm (1/2")	0.08	(0.72)	0.07	(0.59)	0.06	(0.50)	0.05	(0.44)	0.04	(0.39)	0.04	(0.35)	N/A	
16mm (5/8")	0.16	(1.39)	0.13	(1.16)	0.11	(1.00)	0.10	(0.87)	0.09	(0.78)	0.08	(0.70)	N/A	
20mm (3/4")	0.42	(3.72)	0.36	(3.20)	0.32	(2.81)	0.28	(2.50)	0.25	(2.25)	0.23	(2.05)	0.21	(1.88)
25mm (1")	0.45	(4.02)	0.39	(3.46)	0.34	(3.04)	0.31	(2.71)	0.28	(2.45)	0.25	(2.23)	0.23	(2.05)
32mm (1-1/4")	0.50	(4.45)	0.44	(3.88)	0.39	(3.44)	0.35	(3.09)	0.32	(2.81)	0.29	(2.57)	0.27	(2.37)
40mm (1-1/2")	0.59	(5.24)	0.52	(4.57)	0.46	(4.05)	0.41	(3.64)	0.37	(3.31)	0.34	(3.03)	0.32	(2.79)
50mm (2")	N/A		1.13	(10.04)	1.02	(9.06)	0.93	(8.26)	0.86	(7.59)	0.79	(7.02)	0.74	(6.53)
63mm (2-1/2")	N/A		2.35	(20.84)	2.15	(18.99)	1.97	(17.44)	1.82	(16.13)	1.69	(15.00)	1.58	(14.01)
80mm (3-1/4")	N/A		4.72	(41.75)	4.35	(38.51)	4.04	(35.75)	3.77	(33.35)	3.53	(31.25)	3.32	(29.41)
100mm (4")	N/A		5.57	(49.33)	5.16	(45.63)	4.79	(42.44)	4.48	(39.67)	4.21	(37.24)	3.96	(35.09)

Bimba EF2 Cylinders

EFT Cylinders

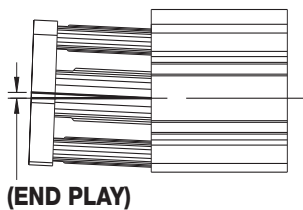
Maximum Moments N-m (in-lb)

Bore	Stroke Length				
	40mm	45mm	50mm	75mm	100mm
12mm (1/2")	N/A	N/A	N/A	N/A	N/A
16mm (5/8")	N/A	N/A	N/A	N/A	N/A
20mm (3/4")	0.20 (1.74)	0.18 (1.62)	0.17 (1.51)	N/A	N/A
25mm (1")	0.21 (1.89)	0.20 (1.76)	0.19 (1.64)	N/A	N/A
32mm (1-1/4")	0.25 (2.20)	0.23 (2.05)	0.22 (1.92)	0.16 (1.46)	0.13 (1.18)
40mm (1-1/2")	0.29 (2.59)	0.27 (2.41)	0.26 (2.26)	0.19 (1.72)	0.16 (1.39)
50mm (2")	0.69 (6.11)	0.65 (5.73)	0.61 (5.40)	0.47 (4.19)	0.39 (3.42)
63mm (2-1/2")	1.49 (13.15)	1.40 (12.39)	1.32 (11.71)	1.04 (9.19)	0.85 (7.57)
80mm (3-1/4")	3.14 (27.77)	2.97 (26.30)	2.82 (24.98)	2.26 (19.96)	1.88 (16.63)
100mm (4")	3.75 (33.17)	3.55 (31.45)	3.38 (29.90)	2.71 (24.00)	2.26 (20.04)



Tooling Plate End Play mm (in)

Bore	Stroke Length						
	5mm	10mm	15mm	20mm	25mm	30mm	35mm
12mm (1/2")	0.17 (.007)	0.21 (.008)	0.25 (.010)	0.29 (.012)	0.34 (.013)	0.38 (.015)	N/A
16mm (5/8")	0.18 (.007)	0.23 (.009)	0.27 (.011)	0.32 (.012)	0.36 (.014)	0.41 (.016)	N/A
20mm (3/4")	0.15 (.006)	0.18 (.007)	0.20 (.008)	0.23 (.009)	0.26 (.010)	0.29 (.011)	0.32 (.013)
25mm (1")	0.16 (.006)	0.19 (.007)	0.22 (.008)	0.24 (.010)	0.27 (.011)	0.30 (.012)	0.33 (.013)
32mm (1-1/4")	0.17 (.007)	0.20 (.008)	0.23 (.009)	0.26 (.010)	0.28 (.011)	0.31 (.012)	0.34 (.013)
40mm (1-1/2")	0.17 (.007)	0.20 (.008)	0.23 (.009)	0.26 (.010)	0.28 (.011)	0.31 (.012)	0.34 (.013)
50mm (2")	N/A	0.26 (.010)	0.30 (.012)	0.33 (.013)	0.36 (.014)	0.40 (.016)	0.43 (.017)
63mm (2-1/2")	N/A	0.18 (.007)	0.20 (.008)	0.22 (.009)	0.24 (.010)	0.26 (.010)	0.28 (.011)
80mm (3-1/4")	N/A	0.20 (.008)	0.23 (.009)	0.25 (.010)	0.27 (.011)	0.29 (.011)	0.31 (.012)
100mm (4")	N/A	0.21 (.008)	0.23 (.009)	0.26 (.010)	0.28 (.011)	0.30 (.012)	0.32 (.013)



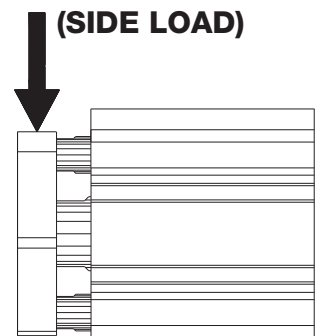
Bore	Stroke Length				
	40mm	45mm	50mm	75mm	100mm
12mm (1/2")	N/A	N/A	N/A	N/A	N/A
16mm (5/8")	N/A	N/A	N/A	N/A	N/A
20mm (3/4")	0.35 (.014)	0.38 (.015)	0.40 (.016)	N/A	N/A
25mm (1")	0.36 (.014)	0.39 (.015)	0.42 (.016)	N/A	N/A
32mm (1-1/4")	0.37 (.015)	0.40 (.016)	0.43 (.017)	0.57 (.022)	0.71 (.028)
40mm (1-1/2")	0.37 (.015)	0.40 (.016)	0.43 (.017)	0.57 (.022)	0.71 (.028)
50mm (2")	0.46 (.018)	0.50 (.020)	0.53 (.021)	0.70 (.027)	0.86 (.034)
63mm (2-1/2")	0.30 (.012)	0.32 (.013)	0.35 (.014)	0.45 (.018)	0.55 (.022)
80mm (3-1/4")	0.33 (.013)	0.36 (.014)	0.38 (.015)	0.49 (.019)	0.60 (.023)
100mm (4")	0.34 (.014)	0.36 (.014)	0.39 (.015)	0.50 (.020)	0.61 (.024)

Bimba EF2 Cylinders

EFT Cylinders with X Option Maximum Side Loads kg-Force (lb)

Bore	Stroke Length							
	5mm	10mm	15mm	20mm	25mm	30mm	35mm	
12mm (1/2")	N/A	2.99 (6.58)	2.85 (6.28)	2.76 (6.07)	2.69 (5.92)	2.63 (5.80)	N/A	
16mm (5/8")	N/A	4.21 (9.27)	4.02 (8.84)	3.88 (8.54)	3.78 (8.32)	3.70 (8.15)	N/A	
20mm (3/4")	N/A	8.13 (17.90)	7.84 (17.25)	7.63 (16.79)	7.47 (16.45)	7.35 (16.18)	7.26 (15.97)	
25mm (1")	N/A	8.52 (18.76)	8.18 (18.01)	7.94 (17.47)	7.75 (17.06)	7.60 (16.74)	7.49 (16.48)	
32mm (1-1/4")	N/A	8.75 (19.27)	8.42 (18.53)	8.16 (17.97)	7.96 (17.53)	7.80 (17.18)	7.68 (16.90)	
40mm (1-1/2")	N/A	10.18 (22.40)	9.69 (21.34)	9.32 (20.52)	9.03 (19.87)	8.78 (19.33)	8.58 (18.89)	
50mm (2")	N/A	15.11 (33.26)	14.49 (31.90)	14.01 (30.84)	13.63 (30.00)	13.31 (29.30)	13.05 (28.72)	
63mm (2-1/2")	N/A	24.31 (53.50)	23.36 (51.41)	22.61 (49.76)	22.00 (48.42)	21.50 (47.32)	21.07 (46.38)	
80mm (3-1/4")	N/A	38.19 (84.06)	36.78 (80.96)	35.64 (78.44)	34.68 (76.34)	33.76 (74.32)	33.19 (73.06)	
100mm (4")	N/A	42.40 (93.34)	40.83 (89.88)	39.52 (86.98)	38.39 (84.51)	37.43 (82.38)	36.58 (80.53)	

Bore	Stroke Length				
	40mm	45mm	50mm	75mm	100mm
12mm (1/2")	N/A	N/A	N/A	N/A	N/A
16mm (5/8")	N/A	N/A	N/A	N/A	N/A
20mm (3/4")	7.17 (15.79)	7.11 (15.65)	7.05 (15.52)	N/A	N/A
25mm (1")	7.39 (16.27)	7.31 (16.09)	7.24 (15.94)	N/A	N/A
32mm (1-1/4")	7.57 (16.66)	7.48 (16.46)	7.40 (16.29)	7.14 (15.71)	6.98 (15.36)
40mm (1-1/2")	8.41 (18.52)	8.27 (18.20)	8.14 (17.92)	7.70 (16.96)	7.44 (16.38)
50mm (2")	12.82 (28.23)	12.63 (27.81)	12.47 (27.44)	11.88 (26.16)	11.53 (25.39)
63mm (2-1/2")	20.71 (45.59)	20.40 (44.90)	20.13 (44.30)	19.16 (42.18)	18.57 (40.88)
80mm (3-1/4")	32.60 (71.75)	32.07 (70.60)	31.61 (69.59)	29.95 (65.92)	28.90 (63.61)
100mm (4")	35.84 (78.90)	35.19 (77.46)	34.61 (76.18)	32.43 (71.38)	31.01 (68.26)



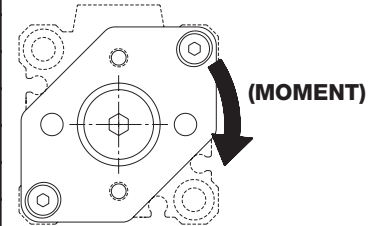
Maximum Moments N-m (in-lb)

Bore	Stroke Length							
	5mm	10mm	15mm	20mm	25mm	30mm	35mm	
12mm (1/2")	N/A	0.15 (1.31)	0.14 (1.27)	0.14 (1.23)	0.13 (1.21)	0.13 (1.19)	N/A	
16mm (5/8")	N/A	0.27 (2.42)	0.26 (2.32)	0.25 (2.26)	0.25 (2.21)	0.24 (2.18)	N/A	
20mm (3/4")	N/A	0.68 (6.14)	0.66 (5.94)	0.64 (5.80)	0.63 (5.70)	0.62 (5.62)	0.62 (5.56)	
25mm (1")	N/A	0.77 (6.93)	0.74 (6.70)	0.72 (6.53)	0.71 (6.40)	0.70 (6.30)	0.69 (6.22)	
32mm (1-1/4")	N/A	0.89 (7.99)	0.86 (7.79)	0.85 (7.63)	0.83 (7.52)	0.82 (7.43)	0.82 (7.35)	
40mm (1-1/2")	N/A	1.11 (10.02)	1.08 (9.71)	1.05 (9.48)	1.03 (9.29)	1.02 (9.15)	1.00 (9.03)	
50mm (2")	N/A	2.16 (19.48)	2.10 (18.95)	2.06 (18.54)	2.02 (18.22)	1.99 (17.96)	1.97 (17.75)	
63mm (2-1/2")	N/A	4.31 (38.84)	4.18 (37.70)	4.08 (36.80)	4.01 (36.09)	3.94 (35.51)	3.89 (35.02)	
80mm (3-1/4")	N/A	8.44 (76.07)	8.21 (73.99)	8.03 (72.32)	7.88 (70.96)	7.75 (69.82)	7.64 (68.86)	
100mm (4")	N/A	10.63 (95.78)	10.35 (93.25)	10.12 (91.16)	9.93 (89.42)	9.76 (87.94)	9.62 (86.67)	

Bimba EF2 Cylinders

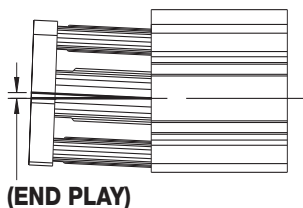
EFT Cylinders with X Option Maximum Moments N-m (in-lb)

Bore	Stroke Length					
	40mm	45mm	50mm	75mm	100mm	
12mm (1/2")	N/A	N/A	N/A	N/A	N/A	
16mm (5/8")	N/A	N/A	N/A	N/A	N/A	
20mm (3/4")	0.61 (5.50)	0.61 (5.46)	0.60 (5.42)	N/A	N/A	
25mm (1")	0.68 (6.15)	0.68 (6.10)	0.67 (6.05)	N/A	N/A	
32mm (1-1/4")	0.81 (7.29)	0.80 (7.24)	0.80 (7.20)	0.76 (6.84)	0.75 (6.77)	
40mm (1-1/2")	0.99 (8.93)	0.98 (8.84)	0.97 (8.77)	0.90 (8.15)	0.89 (8.02)	
50mm (2")	1.95 (17.57)	1.93 (17.42)	1.92 (17.28)	1.79 (16.16)	1.77 (15.91)	
63mm (2-1/2")	3.84 (34.61)	3.80 (34.25)	3.77 (33.95)	3.47 (31.26)	3.40 (30.64)	
80mm (3-1/4")	7.55 (68.03)	7.47 (67.32)	7.40 (66.69)	6.77 (60.95)	6.61 (59.55)	
100mm (4")	9.50 (85.57)	9.39 (84.60)	9.30 (83.75)	8.95 (80.63)	8.73 (78.66)	



Tooling Plate End Play mm (in)

Bore	Stroke Length							
	5mm	10mm	15mm	20mm	25mm	30mm	35mm	
12mm (1/2")	N/A	0.10 (.004)	0.08 (.003)	0.08 (.003)	0.05 (.002)	0.05 (.002)	N/A	
16mm (5/8")	N/A	0.10 (.004)	0.08 (.003)	0.08 (.003)	0.08 (.003)	0.05 (.002)	N/A	
20mm (3/4")	N/A	0.10 (.004)	0.08 (.003)	0.08 (.003)	0.05 (.002)	0.05 (.002)	0.05 (.002)	
25mm (1")	N/A	0.08 (.003)	0.08 (.003)	0.08 (.003)	0.05 (.002)	0.05 (.002)	0.05 (.002)	
32mm (1-1/4")	N/A	0.08 (.003)	0.08 (.003)	0.05 (.002)	0.05 (.002)	0.05 (.002)	0.05 (.002)	
40mm (1-1/2")	N/A	0.08 (.003)	0.05 (.002)	0.05 (.002)	0.05 (.002)	0.05 (.002)	0.05 (.002)	
50mm (2")	N/A	0.08 (.003)	0.08 (.003)	0.05 (.002)	0.05 (.002)	0.05 (.002)	0.05 (.002)	
63mm (2-1/2")	N/A	0.05 (.002)	0.05 (.002)	0.05 (.002)	0.05 (.002)	0.05 (.002)	0.03 (.001)	
80mm (3-1/4")	N/A	0.05 (.002)	0.05 (.002)	0.05 (.002)	0.05 (.002)	0.03 (.001)	0.03 (.001)	
100mm (4")	N/A	0.05 (.002)	0.05 (.002)	0.03 (.001)	0.03 (.001)	0.03 (.001)	0.03 (.001)	



Bore	Stroke Length				
	40mm	45mm	50mm	75mm	100mm
12mm (1/2")	N/A	N/A	N/A	N/A	N/A
16mm (5/8")	N/A	N/A	N/A	N/A	N/A
20mm (3/4")	0.05 (.002)	0.05 (.002)	0.05 (.002)	N/A	N/A
25mm (1")	0.05 (.002)	0.05 (.002)	0.03 (.001)	N/A	N/A
32mm (1-1/4")	0.05 (.002)	0.05 (.002)	0.03 (.001)	0.03 (.001)	0.03 (.001)
40mm (1-1/2")	0.05 (.002)	0.03 (.001)	0.03 (.001)	0.03 (.001)	0.13 (.005)
50mm (2")	0.05 (.002)	0.05 (.002)	0.05 (.002)	0.03 (.001)	0.13 (.005)
63mm (2-1/2")	0.03 (.001)	0.03 (.001)	0.03 (.001)	0.03 (.001)	0.13 (.005)
80mm (3-1/4")	0.03 (.001)	0.03 (.001)	0.03 (.001)	0.03 (.001)	0.13 (.005)
100mm (4")	0.03 (.001)	0.03 (.001)	0.03 (.001)	0.03 (.001)	0.13 (.005)

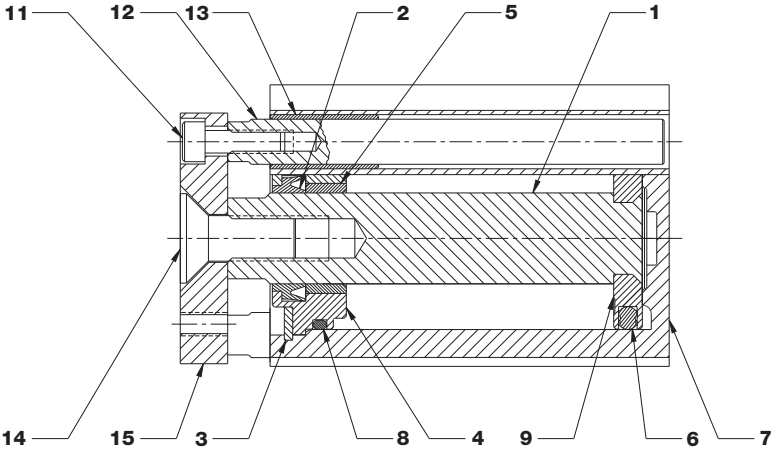
Bimba EF2 Cylinders

Components

Shown in millimeters (inches)

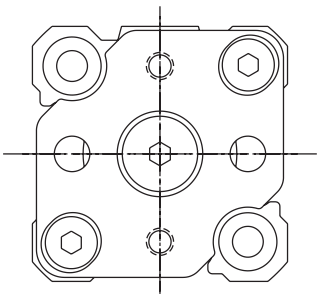
Part List

Part #	Description	Material
1	Rod	4301 (303) Stainless Steel
2	Rod Seal/Wiper	Nitrile (Standard) or Fluoroelastomer (High Temperature Option)
3	Retaining Ring	Zinc Plated Carbon Steel or Stainless Steel (Optional)
4	Rod Guide	12-20mm: Bronze / 25-100mm: Anodized Aluminum
5	Bushing	12-20mm: Bronze / 25-100mm: Self Lubricating Nylon
6	Piston Seal	Nitrile (Standard) or Fluoroelastomer (High Temperature Option)
7	Cylinder Body	Polytetrafluoroethylene (PTFE) Impregnated Hard Anodized Aluminum
8	Rod Guide Seal	Nitrile (Standard) or Fluoroelastomer (High Temperature Option)
9	Piston	High Strength Aluminum Alloy
11	Cap Screw	Stainless Steel
12	Guide Rod	Chrome Plated Stainless Steel
13	Guide Bushing	Delrin
14	Flat Screw	Stainless Steel
15	Plate	Clear Coat Anodized Aluminum

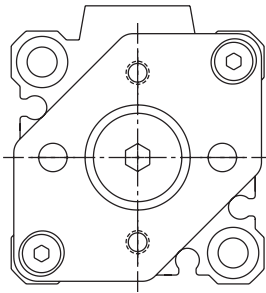


Tooling Plate Styles

12mm to 16mm Bore



20mm to 100mm Bore

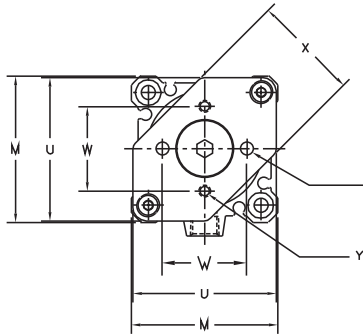


Bimba EF2 Cylinders

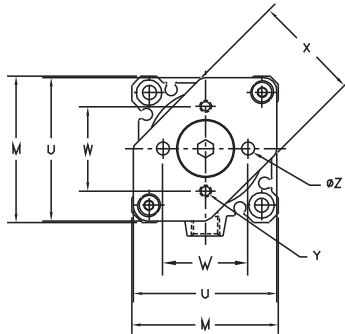
Dimensions

Shown in millimeters (inches)

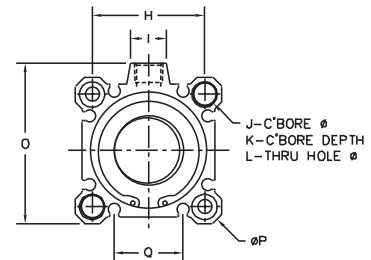
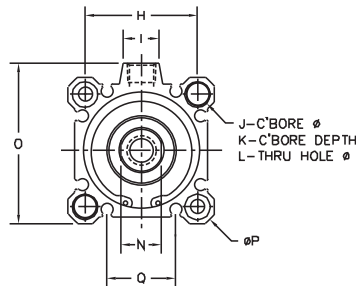
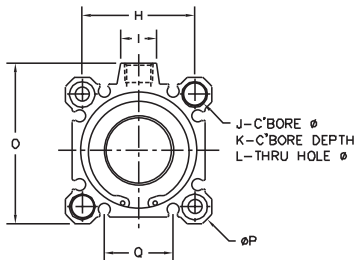
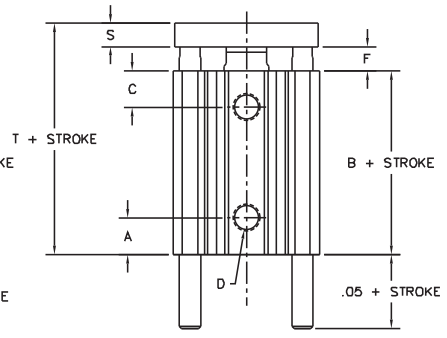
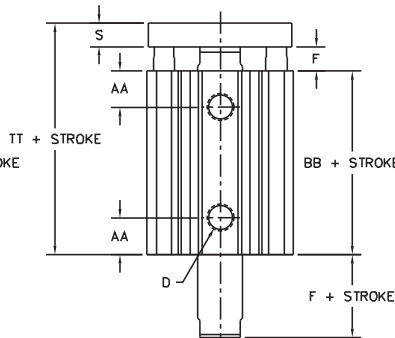
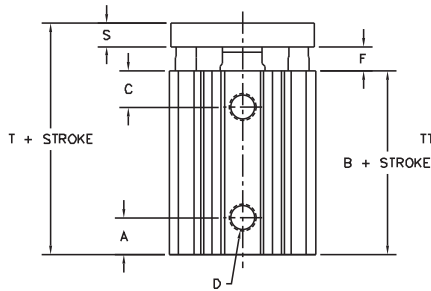
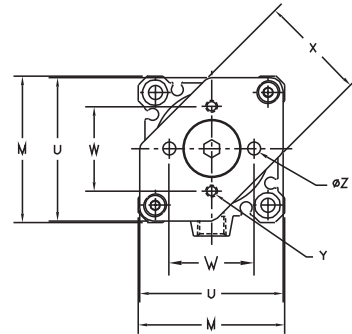
EFT Cylinder



EFDT Cylinder



X Option



Double Acting/Non-Rotating

Bore	A	AA	B	BB	C	D	F	H		
12mm (1/2")	3.8 (0.15)	10.6 (0.42)	17.0 (0.67)	25.2 (0.99)	8.9 (0.35)	M5 x 0.8 (#10-32)	3.5 (0.14)	15.5 (0.61)	N/A	6.1 (0.24)
16mm (5/8")	4.5 (0.18)	10.7 (0.42)	18.5 (0.73)	26.0 (1.03)	9.4 (0.37)	M5 x 0.8 (#10-32)	3.5 (0.14)	20.0 (0.79)	8.7 (0.34)	6.5 (0.26)
20mm (3/4")	4.8 (0.19)	10.1 (0.40)	19.5 (0.77)	26.0 (1.03)	9.4 (0.37)	M5 x 0.8 (#10-32)	4.5 (0.18)	25.5 (1.00)	9.5 (0.38)	9.0 (0.36)
25mm (1")	5.1 (0.20)	11.2 (0.44)	22.5 (0.89)	29.0 (1.14)	10.9 (0.43)	M5 x 0.8 (#10-32)	5.0 (0.20)	28.0 (1.10)	10.3 (0.41)	9.0 (0.36)
32mm (1-1/4")	7.0 (0.28)	8.9 (0.35)	23.0 (0.91)	30.5 (1.20)	10.4 (0.41)	G - 1/8 (NPT 1/8)	7.0 (0.28)	34.0 (1.34)	18.6 (0.73)	9.0 (0.36)
40mm (1-1/2")	7.4 (0.29)	13.1 (0.52)	29.5 (1.16)	40.0 (1.58)	13.2 (0.52)	G - 1/8 (NPT 1/8)	7.0 (0.28)	40.0 (1.58)	17.3 (0.68)	9.0 (0.36)
50mm (2")	9.4 (0.37)	12.2 (0.48)	30.5 (1.20)	40.5 (1.60)	13.7 (0.54)	G - 1/4 (NPT 1/4)	8.0 (0.32)	50.0 (1.97)	20.0 (0.79)	11.1 (0.44)
63mm (2-1/2")	9.7 (0.38)	12.8 (0.50)	36.0 (1.42)	42.0 (1.66)	15.7 (0.62)	G - 1/4 (NPT 1/4)	8.0 (0.32)	60.0 (2.36)	20.0 (0.79)	14.1 (0.56)
80mm (3-1/4")	11.6 (0.46)	14.4 (0.57)	43.5 (1.71)	51.0 (2.01)	17.8 (0.70)	G - 3/8 (NPT 3/8)	10.0 (0.39)	77.0 (3.03)	26.0 (1.02)	17.5 (0.69)
100mm (4")	12.2 (0.48)	18.3 (0.72)	53.0 (2.09)	60.5 (2.32)	24.4 (0.96)	G - 3/8 (NPT 3/8)	12.0 (0.47)	94.0 (3.70)	26.0 (1.02)	17.5 (0.69)

Bimba EF2 Cylinders

Dimensions

Shown in millimeters (inches)

Bore	K	L	M	N	O	P	Q	S
12mm (1/2")	3.5 (0.14)	3.5 (0.14)	25.0 (0.98)	5.0 (0.19)	25.0 (0.98)	32.0 (1.26)	5.3 (0.21)	6.0 (0.24)
16mm (5/8")	3.5 (0.14)	3.5 (0.14)	29.0 (1.14)	6.0 (0.25)	29.0 (1.14)	38.0 (1.50)	7.8 (0.31)	6.0 (0.24)
20mm (3/4")	7.0 (0.28)	5.5 (0.22)	36.0 (1.42)	8.0 (0.31)	36.0 (1.42)	47.0 (1.85)	10.5 (0.41)	6.9 (0.27)
25mm (1")	7.0 (0.28)	5.5 (0.22)	40.0 (1.58)	10.0 (0.38)	40.0 (1.58)	52.0 (2.05)	11.5 (0.45)	8.3 (0.33)
32mm (1-1/4")	7.0 (0.28)	5.5 (0.22)	45.0 (1.77)	14.0 (0.56)	49.5 (1.95)	60.0 (2.36)	17.7 (0.70)	8.3 (0.33)
40mm (1-1/2")	7.0 (0.28)	5.5 (0.22)	52.0 (2.05)	14.0 (0.56)	57.0 (2.24)	69.0 (2.72)	24.5 (0.96)	8.3 (0.33)
50mm (2")	8.0 (0.31)	6.9 (0.27)	64.0 (2.52)	17.0 (0.69)	71.0 (2.80)	86.0 (3.39)	29.3 (1.16)	12.1 (0.48)
63mm (2-1/2")	10.5 (0.41)	8.8 (0.35)	77.0 (3.03)	17.0 (0.69)	84.0 (3.31)	103.0 (4.06)	29.1 (1.15)	12.5 (0.49)
80mm (3-1/4")	13.5 (0.53)	11.0 (0.43)	98.0 (3.86)	22.0 (0.88)	104.0 (4.09)	132.0 (5.20)	28.1 (1.11)	14.0 (0.55)
100mm (4")	13.5 (0.53)	11.0 (0.43)	117.0 (4.61)	27.0 (1.06)	123.5 (4.86)	156.0 (6.14)	32.3 (1.27)	14.0 (0.55)

Bore	T	TT	U	W	X	Y		Z	
						Standard	With Option E	Standard	With Option E
12mm (1/2")	26.5 (1.04)	34.7 (1.37)	24.3 (0.96)	14.0 (0.55)	20.8 (0.82)	M3 x 0.5 6H	#4-40 UNC-2B	4.1 (0.16)	3.6 (0.14)
16mm (5/8")	28.0 (1.10)	35.5 (1.40)	28.0 (1.10)	20.0 (0.79)	25.0 (0.98)	M3 x 0.5 6H	#4-40 UNC-2B	4.1 (0.16)	3.6 (0.14)
20mm (3/4")	30.8 (1.21)	37.4 (1.47)	35.0 (1.38)	27.0 (1.06)	26.5 (1.04)	M4 x 0.7 6H	#6-32 UNC-2B	5.2 (0.20)	4.3 (0.17)
25mm (1")	35.8 (1.41)	42.3 (1.67)	39.0 (1.54)	27.0 (1.06)	30.0 (1.18)	M4 x 0.7 6H	#6-32 UNC-2B	5.2 (0.20)	4.3 (0.17)
32mm (1-1/4")	38.3 (1.52)	45.8 (1.80)	44.0 (1.73)	30.0 (1.18)	34.3 (1.35)	M4 x 0.7 6H	#8-32 UNC-2B	5.2 (0.20)	4.7 (0.18)
40mm (1-1/2")	44.8 (1.76)	55.3 (2.18)	51.0 (2.01)	30.0 (1.18)	38.0 (1.50)	M4 x 0.7 6H	#8-32 UNC-2B	5.2 (0.20)	4.7 (0.18)
50mm (2")	50.6 (1.99)	60.6 (2.39)	63.0 (2.48)	42.8 (1.69)	48.0 (1.89)	M5 x 0.8 6H	#10-32 UNF-2B	6.4 (0.25)	5.6 (0.22)
63mm (2-1/2")	56.5 (2.22)	62.5 (2.46)	75.8 (2.98)	42.8 (1.69)	53.7 (2.11)	M5 x 0.8 6H	#10-32 UNF-2B	6.4 (0.25)	5.6 (0.22)
80mm (3-1/4")	67.5 (2.66)	75.0 (2.95)	97.0 (3.82)	50.8 (2.00)	74.8 (2.94)	M6 x 1.0 6H	#1/4-20 UNC-2B	7.1 (0.28)	7.2 (0.29)
100mm (4")	79.0 (3.11)	86.5 (3.41)	115.5 (4.55)	50.8 (2.00)	93.3 (3.67)	M6 x 1.0 6H	#1/4-20 UNC-2B	7.1 (0.28)	7.2 (0.29)

*See page 2.67 for overall body length with MRS option.

When option E is specified, user interface threads are designated U.S. customary (inch). This includes ports, rod threads and threaded mounting options (as applicable).

Bimba EF2 Cylinders

Weights

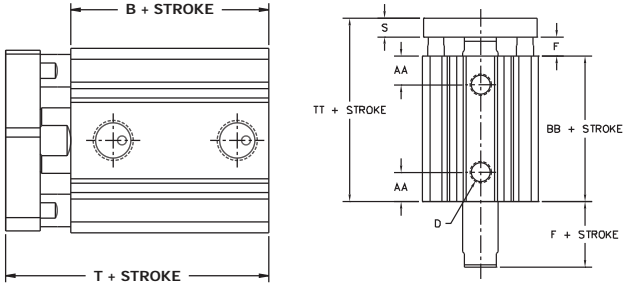
Bore	Approximate Base Weight of Cylinder gram-force (oz.)	Weight Adder per 5mm of Stroke gram-force (oz.)
12mm (1/2")	32.3 (1.14)	6.1 (0.22)
16mm (5/8")	53.4 (1.89)	8.6 (0.30)
20mm (3/4")	74.4 (2.62)	13.3 (0.47)
25mm (1")	114.6 (4.04)	16.3 (0.58)
32mm (1-1/4")	166.9 (5.89)	22.6 (0.80)
40mm (1-1/2")	250.7 (8.84)	23.0 (0.81)
50mm (2")	440.4 (15.53)	35.8 (1.26)
63mm (2-1/2")	697.3 (24.60)	45.2 (1.59)
80mm (3-1/4")	1309.6 (46.20)	70.0 (2.47)
100mm (4")	2464.6 (86.94)	117.5 (4.15)

Options

Magnetic Position Sensing (M) (Overall Length Adders)

Model Type and Size	Body Length	Total Length
EFT	B*	T*
12mm – 100mm	10.0 (0.39)	10.0 (0.39)
EFDT	BB*	TT*
12mm	7.2 (0.28)	7.2 (0.28)
16mm – 100mm	10.0 (0.39)	10.0 (0.39)

*Add the following lengths to the overall length dimension for EFT and EFDT cylinders when specifying a magnet option.



Bumpers (B)

(Stroke reduction by model for all bores)

Model	Stroke Reduction mm (inches)
Double Acting, Non-Rotating	3.0 (.12)