

Rod Locks – ISO 6431 Series

RL

Description:

The rod locking device can be used with cylinders ISO 6431 (Bores from 32 to 125 mm)

The device is normally locked. It is unlocked by applying a pneumatic signal. It is possible to lock the cylinder in case of pressure failure or else stop the movement in mid stroke.

Construction:

Body	:	Aluminium (anodized)
Internal parts	:	Brass
Pistons	:	Polymer
Seals	:	NBR
Springs	:	Steel

Specifications:

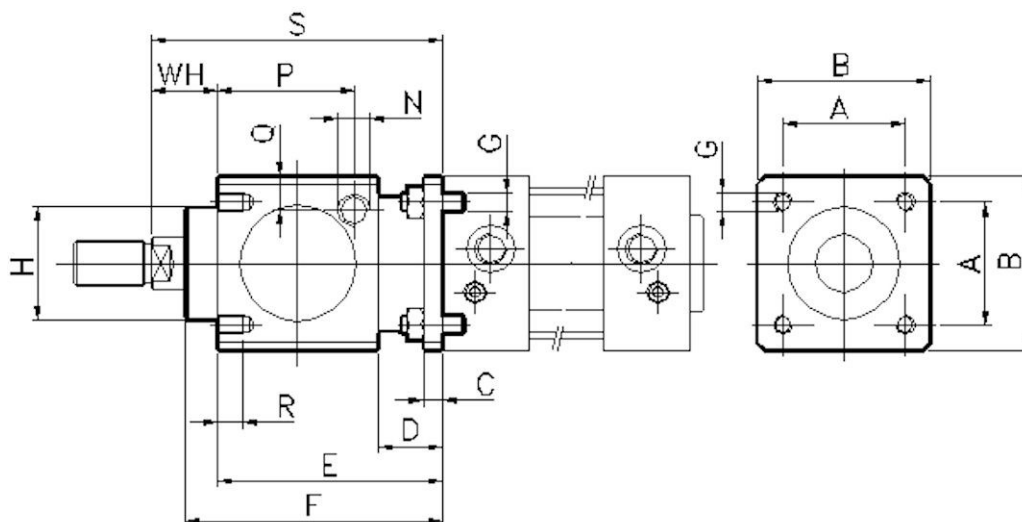
Working pressure	:	3-10 bar
Temperature	:	Max 60°C
Fluid	:	Compressed air, (With or without lubricant).



Locking force:

Part No.	RL032-12S	RL040-16S	RL050-20S	RL063-20S	RL080-25S	RL100-25S	RL125-35S
Bore-Rod Ø (mm)	32-12	40-16	50-20	63-20	80-25	100-25	125-32
Force (N)	790	1240	1930	3060	5400	7700	12040

Dimensions:



Ø	A	B	C	D	E	F	G	H	WH	N	P	Q	R	S	T	Mass (kg)
32	32.5	47	6	20	60	67.5	M6	30	26	G1/8"	33.3	9	8	86	60	0.4
40	38	54	6	20	70	80	M6	35	30	G1/8"	42.5	9	8	100	70	0.6
50	46.5	65	8	24	90	100	M8	40	37	G1/8"	58	12.5	12	127	90	1.1
63	56.5	75	8	24	90	100	M8	45	37	G1/8"	59	17.5	12	127	90	1.5
80	72	95	12	32	110	120	M10	45	46	G1/4"	69	17.5	16	156	110	2.6
100	89	114	12	32	110	120	M10	55	51	G1/4"	69	20	16	161	110	3.5
125	110	138	20	45	140	156	M12	60	65	G1/4"	84.5	19	20	205	140	6.5