

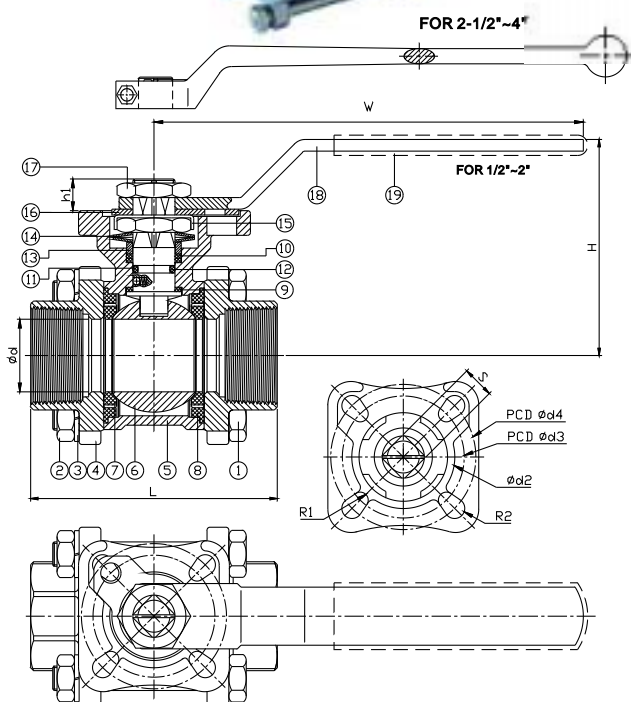


## ★ECONOMIC PATTERN

## FEATURES



- Full port, 1/2"~4" (DN15~DN100)
- W.P. : 1000 WOG (PN63)
- W.T. : -20°C~200°C (-4°F~392°F)
- Investment casting
- Blow-out proof stem
- Live-loading device
- Locking device
- Anti-static device
- ISO 5211 Direct mounting pad
- Length conform to DIN 3202/4-M3-2013ND-M3 (option)
- Automation accessories (option)
- Thread type : ASTM B1.20.1 (NPT)  
DIN2999 & BS21  
ISO228/1 & ISO7/1



ITEM	PARTS	MATERIAL
1	BOLT	AISI 304
2	NUT	
3	SPRING WASHER	
4	CAP	ASTM A351-CF8M
5	BODY	
6	BALL	PTFE
7	SEAT	
8	SEAL	
9	THRUST WASHER	VITON
10	PACKING	
11	O-RING	ASTM A276-316
12	STEM	
13	GLAND RING	AISI 304
14	BELLEVILLE WASHER	AISI 301
15	LOCKING WASHER	AISI 304
16	LOCKING DEVICE	
17	STEM NUT	
18	HANDLE	PVC
19	HANDLE SLEEVE	

DN	d	L	H	W	S	h1	d2	d3	d4	R1	R2	Weight (kg)	Torque (N-M)
15	15	65	60	120	9	8.5	31	36	42	2.75	2.75	0.55	7.5
20	20	75	64									0.73	11
25	25	85	74	148	11	11	35.5	42	50	2.75	3.5	1.08	14
32	32	101	79									1.67	21
40	38	112	95	178	14	13.5	56	50	70	3.5	4.5	2.57	27
50	50	130	103									3.72	50
65	63	162	123	340	17	20.5	76	70	102	4.5	5.5	7.12	85
80	76	188	131.5									10.2	97
100	96		165.5		22	22.5	100	102	125	5.5	6.5	19.4	150

unit:mm

NPS	d	L	H	W	S	h1	d2	d3	d4	R1	R2	Weight (lb)	Torque (in-lb)
1/2"	0.59	2.56	2.36	4.72	0.35	0.33	1.22	1.42	1.65	0.11	0.11	1.21	66.38
3/4"	0.79	2.95	2.52									1.61	97.36
1"	0.98	3.35	2.91	5.83	0.43	0.43	1.4	1.65	1.97	0.11	0.14	2.38	123.91
1-1/4"	1.26	3.98	3.11									3.68	185.86
1-1/2"	1.5	4.41	3.74	7.01	0.55	0.53	2.2	1.97	2.76	0.14	0.18	5.67	238.97
2"	1.97	5.12	4.06									8.2	442.54
2-1/2"	2.48	6.38	4.84	13.39	0.67	0.81	2.99	2.76	4.02	0.18	0.22	15.7	752.31
3"	2.99	7.4	5.18									22.49	858.52
4"	3.78	8.82	6.52		0.87	0.89	3.94	4.02	4.92	0.22	0.26	42.77	1327.61

unit:in



8F., No.201, Sec. 2, Tiding Blvd., Neihu District,  
Taipei City 114, Taiwan R.O.C.

TEL: +886-2-26585800

FAX: +886-2-26582266 / 27997766

Http://www.haitima.com.tw

Email: haitima@seed.net.tw