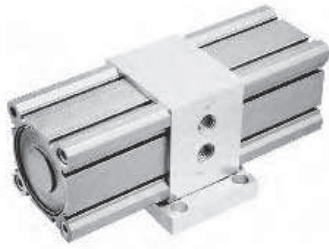


Bimba Air-to-Air Boosters



Basic 2:1 Air Booster

Bimba Basic 2:1 Air Boosters are designed to amplify inadequate air pressure applications. The unit is a self-contained design of integral valve components that reciprocate pistons to double the output pressure. Increasing the output air pressure will increase the output force of a pneumatic cylinder where space constraints exist.

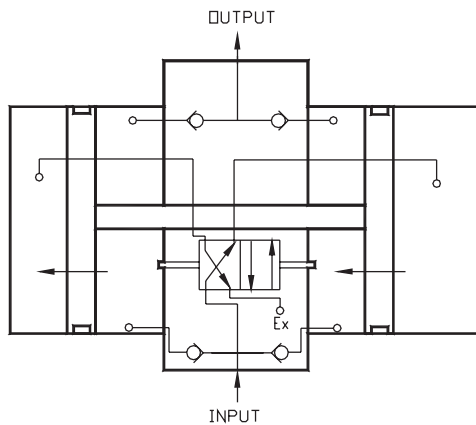
How to Order and List Prices

Model/Price	Dimensions (inch)
<p>Model Number: CSS-00118-A</p> <p>List Price: \$442.10</p> <p>Availability: Stock Item</p>	<p>Model Number: CSS-00118-A</p> <p>List Price: \$442.10</p> <p>Availability: Stock Item</p>

Engineering Specifications

- Maximum Input Pressure: 125 psi
- Operating Temperature: 15° to 160°F
- Lubrication: HT-99 oil
- Bodies and Center Section: Aluminum; Hard Coat with PTFE
- Mounting Plate: Anodized Aluminum
- Estimated Charge Time: 28 seconds per 1 gallon reservoir

Note: Bimba Air Boosters are designed for intermittent duty usage such as maintaining pressure in an air reservoir. Continuous cycling decreases seal life.



FLOW DATA

