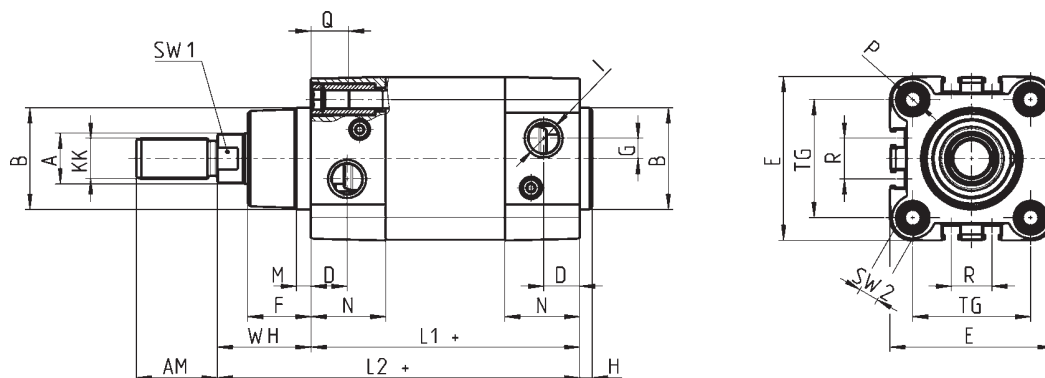


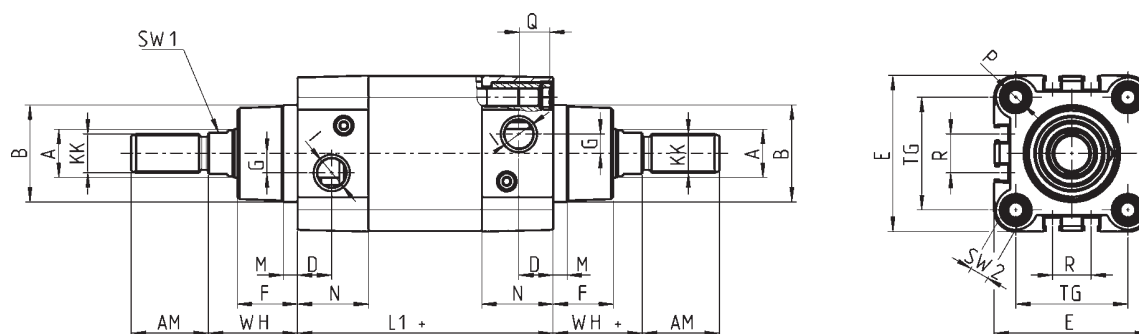
# Bimba ISO 643I, VDMA 24562 Air Cylinders

## Basic Cylinder (mm)



Bore	A	KK	B <sup>d11</sup>	D	F	AM	H	I	WH	L1	L2	M	N	Q	P	G	TG	R	E	SW1	SW2	Cushion Stroke	Weight (Kg)	Weight per mm
32	12	M10x1,25	30	14	18	22	4	G1/8	26	94	120	5	26	16	M6	5	32,5	13	46	10	6	19	.60	.003
40	16	M12x1,25	35	15	21	24	4	G1/4	30	105	135	5	29	16	M6	5	38	13,5	55	13	6	22	.89	.005
50	20	M16x1,5	40	15	25	32	4	G1/4	37	106	143	6	29,5	16	M8	8	46,5	16	64,5	17	8	22	1.44	.006
63	20	M16x1,5	45	21	26	32	4	G3/8	37	121	158	6	36,5	16	M8	8	56,5	28	75	17	8	22	2.08	.008
80	25	M20x1,5	45	21	30	40	4	G3/8	46	128	174	7	36	19	M10	8	72	30	93	22	10	25	3.43	.01
100	25	M20x1,5	55	23	35	40	4	G1/2	51	138	189	7	38,5	19,5	M10	8	89	40	110	22	10	25	4.85	.01

## Double Rod End (mm)

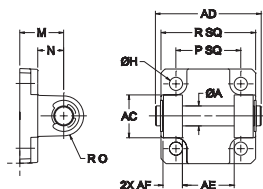


Bore	A	KK	B <sup>d11</sup>	D	F	AM	I	WH	L1	M	N	P	Q	G	TG	R	E	SW1	SW2	Cushion Stroke	Weight (Kg)	Weight per mm
32	12	M10x1,25	30	14	18	22	G1/8	26	94	5	26	M6	16	5	32,5	13	46	10	6	19	.69	.003
40	16	M12x1,25	35	15	21	24	G1/4	30	105	5	29	M6	16	5	38	13,5	55	13	6	22	1.06	.006
50	20	M16x1,5	40	15	25	32	G1/4	37	106	6	29,5	M8	16	8	46,5	16	64,5	17	8	22	1.76	.008
63	20	M16x1,5	45	21	26	32	G3/8	37	121	6	36,5	M8	16	8	56,5	28	75	17	8	22	2.40	.01
80	25	M20x1,5	45	21	30	40	G3/8	46	128	7	36	M10	19	8	72	30	93	22	10	25	4.06	.01
100	25	M20x1,5	55	23	35	40	G1/2	51	138	7	38,5	M10	19,5	8	89	40	110	22	10	25	5.55	.01

# Bimba ISO 643I, VDMA 24562 Air Cylinders

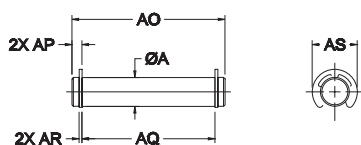
## Accessories

### Clevis Bracket



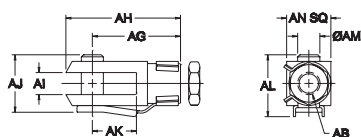
Model	A	H	M	N	O	P	R	AC	AD	AE	AF	Weight (Kg)
CB-32	Ø10	Ø6.6	22	12	R10	22	48	22	53	26	9.5	.086
CB-40	Ø12	Ø6.6	25	15	R12	26	54	26	60	28	12	.130
CB-50	Ø12	Ø9	27	15	R12	28	65	28	68	32	14	.183
CB-63	Ø16	Ø9	32	20	R16	28	76	28	79	40	15	.322
CB-80	Ø16	Ø11	36	21	R16	46	95	46	99	50	20	.543
CB-100	Ø20	Ø11	41	26	R16	55	114	55	121	50	25	.909

### Pivot Pin



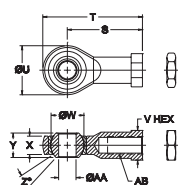
Model	A	AO	AP	AQ	AR	AS	Weight (Kg)
PP-32	Ø10	53	3.5	46	1	16	.035
PP-40	Ø12	60	3.3	53	1.1	19	.055
PP-50	Ø12	68	3.5	61	1.1	19	.060
PP-63	Ø16	79	4	71	1.3	23	.127
PP-80	Ø16	99	4	91	1.3	23	.160
PP-100	Ø20	121	5	111	1.5	29	.300

### Rod Clevis



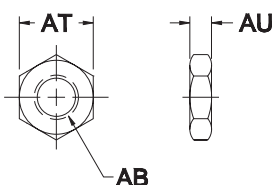
Bore	Model	AB	AG	AH	AI	AJ	AK	AL	AM	AN	Weight (Kg)
32	RC-M10x1.25	M10x1.25	40	52	10	26	20	28	10	20	.097
40	RC-M12x1.25	M12x1.25	48	62	12	32	24	34	12	24	.157
50, 63	RC-M16x1.5	M16x1.5	64	83	16	40	32	42	16	32	.356
80, 100	RC-M20x1.5	M20x1.5	80	105	20	48	40	50	20	40	.714

### Spherical Rod Eye



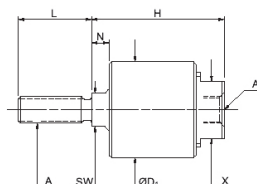
Bore	Model	S	T	U	V	W	X	Y	Z	AA	AB	Weight (Kg)
32	SRE-M10x1.25	43	57	Ø28	17	Ø19	10.5	14	13°	Ø10	M10x1.25	.080
40	SRE-M12x1.25	50	66	Ø32	19	Ø22	12	16	13°	Ø12	M12x1.25	.124
50, 63	SRE-M16x1.5	64	85	Ø42	23	Ø28.5	15	21	15°	Ø16	M16x1.5	.248
80, 100	SRE-M20x1.5	77	102	Ø50	30	Ø35	18	25	14°	Ø20	M20x1.5	.438

### Rod Nut



Bore	Model	AB	AT	AU	Weight (Kg)
32	RN-4	M10x1.25	17	5	.006
40	MN-1	M12x1.25	19	7	.010
50, 63	MN-2	M16x1.5	24	8	.017
80, 100	MN-5	M20x1.5	30	9	.030

### Rod Coupler



Bore	Model	A	B	D <sub>1</sub>	H	L	N	SW	X
25, 32	AC-M10x1.25	M10x1.25	5	29	40	24	5.3	10	17
40	AC-M12x1.25	M12x1.25	7	32	47	24	8.2	13	20
50, 63	AC-M16x1.5	M16x1.5	8	32	48	32	10	13.5	20
80, 100	AC-M20x1.5	M20x1.5	9	45	57	40	10	21	28